

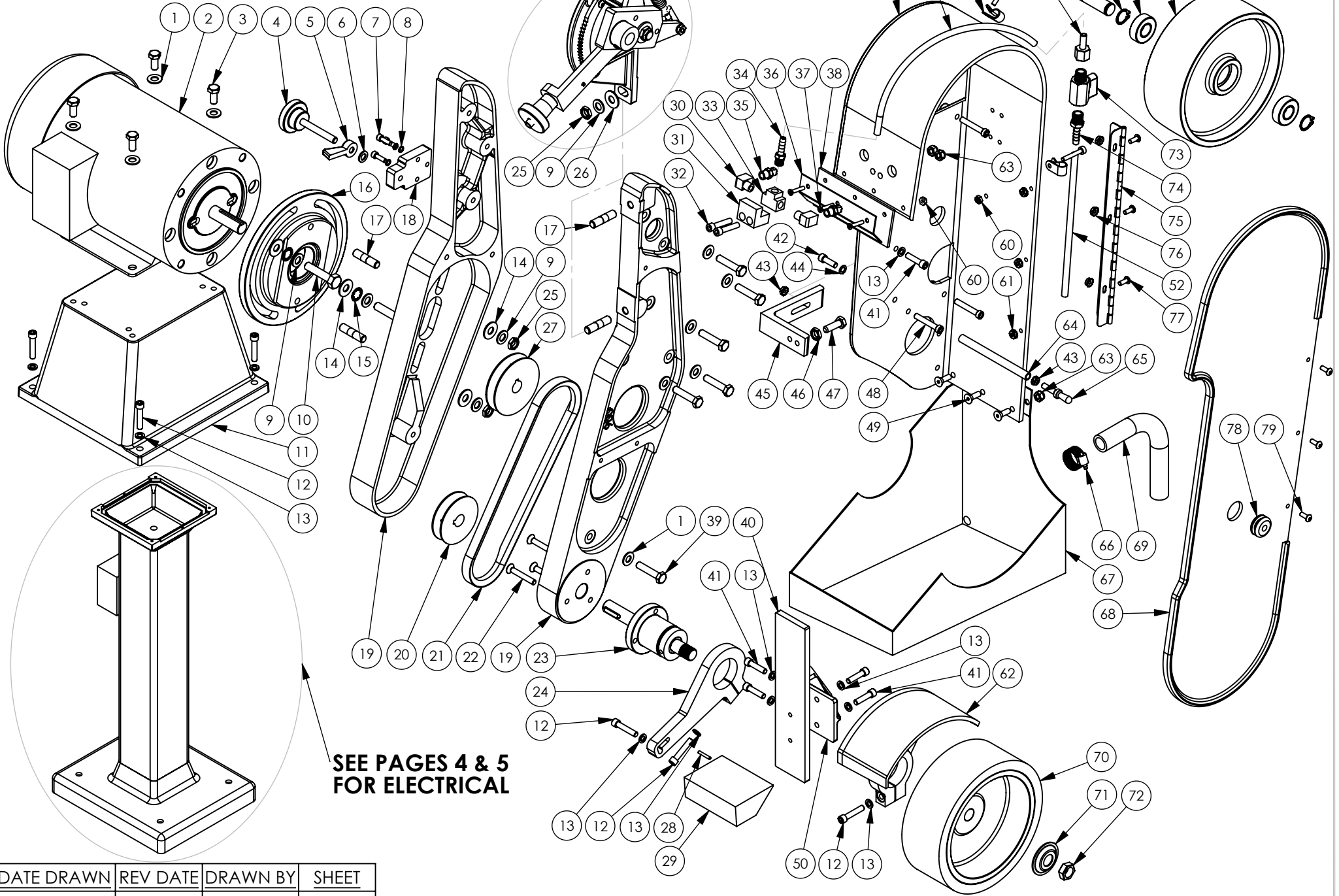
# M960-401

## SCHEMATIC

945S

BURR KING

1220 TAMARA LANE  
WARSAW, MO. 65355



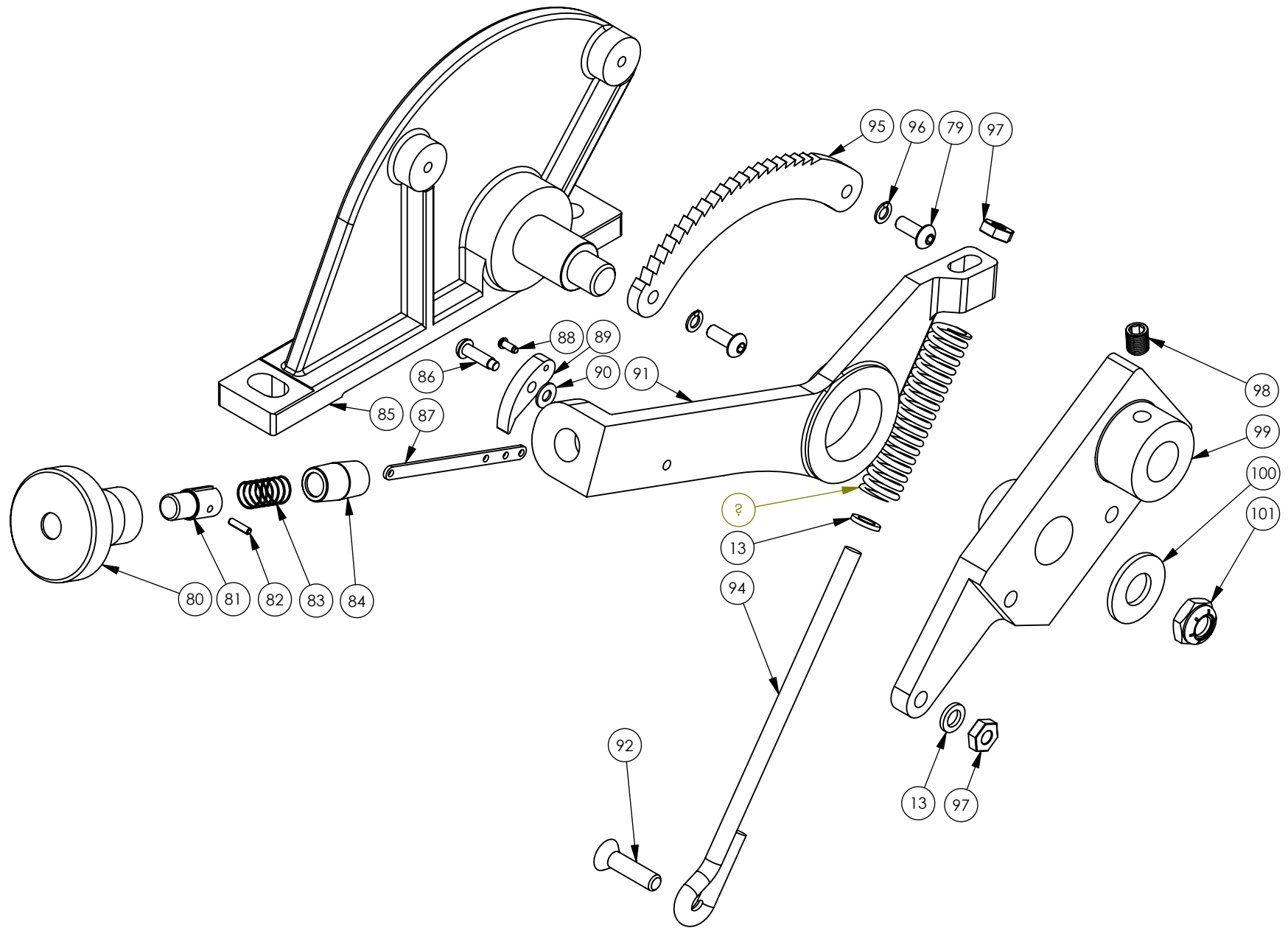
**SEE PAGES 4 & 5  
FOR ELECTRICAL**

DATE DRAWN	REV DATE	DRAWN BY	SHEET
9/25/2009		CMW	1 OF 6

# 945-4S

BURR KING

1220 TAMARA LANE  
WARSAW, MO. 65355



TITLE	DATE DRAWN	REV DATE	DRAWN BY	SHEET
M960-401	9/25/2009		CMW	2 OF 6

<b>M960-401</b>			
ITEM NO.	PART NUMBER	DESCRIPTION	QTY.
1	4	WASHER, 5/16 SAE ZINC PLTD	10
2	MOTOR	CALL FACTORY	1
3	37	BOLT, 5/16-18x3/4 HH, GRD5, PLTD	4
4	921-4	KNOB, TRACKING ASSY	1
5	922	LOCK, KNOB, TRACKING	1
6	18	WASHER, 960-516, AN	1
7	2-0023	SCREW, 10-24 X 5/8 SC ALLEN	3
8	5-0035	WASHER, #10, LOCK, HIGH COLLAR	3
9	17	WASHER, 960-616, AN	6
10	1-0003	BOLT, 3/8-16 x 1 1/4 HEX HEAD	2
11	941	BASE	1
12	31	SCREW, 1/4-20x1 1/4 SOC CAP	7
13	5	WASHER, 960-416, AN	12
14	42	WASHER, 3/8,THRU-HARD, YZ	4
15	5-0014	WASHER, 3/8, LOCK, INTERNAL STAR	2
16	908	ADAPTER, C-FACE MOTOR	1
17	920	STUD 3/8"x1 1/2", DOUBLE	4
18	923-4	BRACKET, TRACKING	1
19	900-4	FRAME/GUARD, ASSEMBLY	1
20	725	PULLEY, 2 1/2"	1
21	429K	BELT, V, NOTCHED, 4L240	1
22	6	SCREW, 1/4-20 x 1 1/2 FH ALLEN	3
23	701	BEARING, CONTACT WHEEL ASSY	1
24	705-1	ARM, WORKREST SUPPORT	1
25	39	NUT, 3/8-24, JAM, ESNA, NTE	4
26	40	WASHER, 3/8, SAE, PLTD	1
27	730	PULLEY, 3"	1
28	6-0014	PIN, 1/8 X 3/4, ROLL	1
29	706-1	WORKREST, ANTI-TILT	1
30	3569	ELBOW, STREET, EXTRUD, 1/8NP	2
31	3571	BLOCK, SECURING	1
32	1-0035	BOLT, 1/4-20 x 1.25, SOC CAP SS	2
33	3570	TEE, BRASS, EXTRUDE, 1/8NPTF	1
34	3572	BARB, 1/8MP TO 1/4 TUBE, BRASS	1
35	3568	NOZZLE, SPRAY, BRASS, V8NPT	2
36	3577-3	BRACKET, BRUSH RETAINING	1
37	3-0026	SCREW, 8-32 x 1, FLATHEAD, PHILLIPS, SS	3
38	3577	FELT	1
39	1-0019	BOLT, 5/16-18x1 1/2 HH, CS, ZN PLTD	6
40	904A	PLATEN, BACKUP	1
41	30	SCREW, 1/4-20x1 SHCS	5
42	209	SCREW, 1/4-20 X 3/4 SHCS	1
43	4-0013	NUT, 1/4-20, KEP	2
44	5-0032	WASHER, 1/4, LOCK, SPLIT, PLTD	1
45	924	SUPPORT, BACKUP	1
46	4-0009	NUT, 5/16-18, JAM, PLTD	1
47	1	BOLT, 5/16-18x1, HH, GRD 5, PLTD	1
48	2-0011	SCREW, 1/4-20 X 1.5 SOC CAP	3
49	3-0039	SCREW, 1/4-20 x 3/4, S/S FH SCS	3
50	904B	BRACKET, PLATEN	1
51	942-4S	GUARD, SAFETY, PAINTED	1
52	3408	TUBING, CLEAR, FLEXIBLE, 1/4ID	1
53	3578	CLAMP,3/8OD, PLS. HOSE	2
54	3-0036	SCREW, 10-32 X 1 1/4 ALLEN CAP	2
55	3340	BARB, HOSE, FM, 1/4H x 1/4F	1
56	707c	SHAFT, BEARING	1
57	701F	RING, RETAINING, 5/8 EXTERNAL	2

<b>M960-401</b>			
ITEM NO.	PART NUMBER	DESCRIPTION	QTY.
58	701B	BEARING	2
59	907	WHEEL, IDLER	1
60	4-0025	NUT, 8-32, ELASTIC, STOP, SS	5
61	23	NUT, 6-32, KEP, PLTD	3
62	903	GUARD, CONTACT WHEEL	1
63	4-0022	NUT, 1/2-20, NYLOK, SS	5
64	942C-4	STANDOFF, DOOR	1
65	742L1	LATCH, STUD, CLEAR ZN PLTD	1
66	3406	CLAMP, HOSE, 7/16" TO 1"	1
67	DF4-1	SCOOP, FLUID, SS	1
68	942B-1	DOOR, GUARD	1
69	3409	HOSE, STL. REINF., 5/8ID VIN	1
70	802	CONTACT WHEEL, 7x2.5, 55 DURO	1
71	726	FLANGE, OUTER WHEEL	1
72	727	NUT, 5/8-18 RH, JAM, BRT PLT	1
73	3337	VALVE, LOW PRESSURE, 1/4 NPT	1
74	3339	BARB, ML, HOSE, 1/4H x 1/4M	1
75	742E	HINGE, GUARD TO DOOR	1
76	14	NUT, 10-24, KEP	3
77	24	SCREW, 6-32 x 1/2, MACH	3
78	742H	GROMMET, SAFETY GUARD DOOR	1
79	9	SCREW, 10-24x1/2 BH, BLK OXIDE	3

<b>945-4S</b>			
ITEM NO.	PART NUMBER	DESCRIPTION	QTY.
80	737A	KNOB, HANDLE	1
81	737B-1	BUTTON	1
82	26	PIN, 3/32 x 3/8, ROLL PLTD	1
83	737D	SPRING, REAR WHEEL ASSY	1
84	737E	NIPPLE, HANDLE	1
85	940	SUPPORT, IDLER WHEEL	1
86	27	SCREW, #8 X 5/8, DRIVE	1
87	937BA	STRIP, BUTTON ASSEMBLY	1
88	28	SCREW, #2 x 1/4, DRIVE	1
89	737F	PAWL	1
90	5-0027	WASHER, #8,18-8 STAINLESS STEEL	1
91	937G	HANDLE	1
92	34	SCREW, 1/4-20 X 1, FH PHILLIPS	1
93	989	SPRING, BELT TENSION	1
94	939	GUIDE, SPRING	1
95	736	SECTOR	1
96	15	WASHER, #10, LOCK	2
97	3	NUT, 1/4-20 JAM, PLTD	2
98	25	SCREW, 5/16-18 x 3/8, SET, SOC	1
99	935	SUPPORT, REAR WHEEL	1
100	21	WASHER, 1/2 SAE, FLAT, ZINC	1
101	20	NUT, 1/2-20, JAM, ESNA, NTE	1

**\* USES A 011D TOGGLE SWITCH**

TITLE	DATE DRAWN	REV DATE	DRAWN BY	SHEET
M960-401	9/25/2009		CMW	3 OF 6

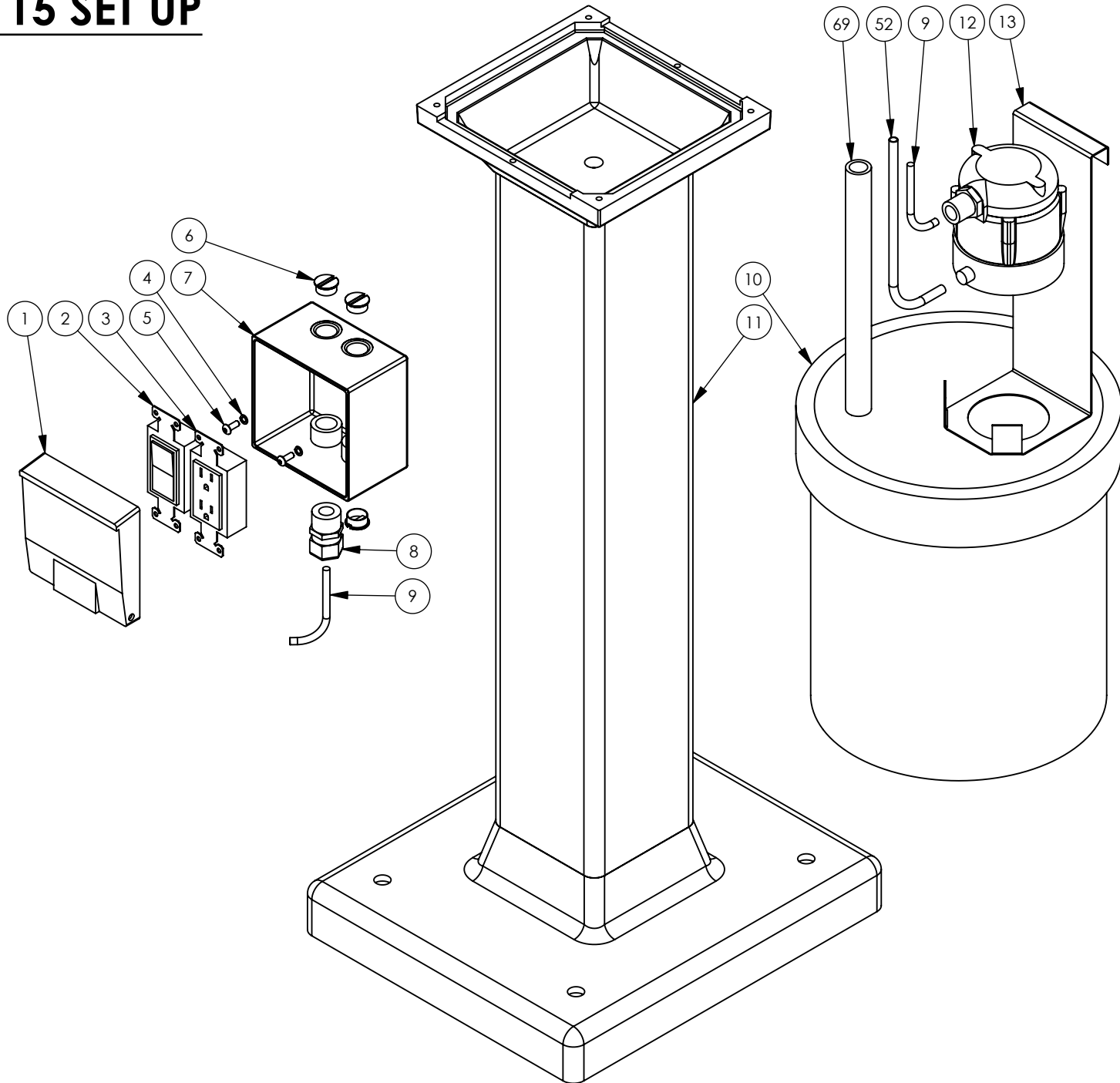
**BURR KING**

1220 TAMARA LANE  
WARSAW, MO. 65355

# 115 SET UP

BURR KING

1220 TAMARA LANE  
WARSAW, MO. 65355

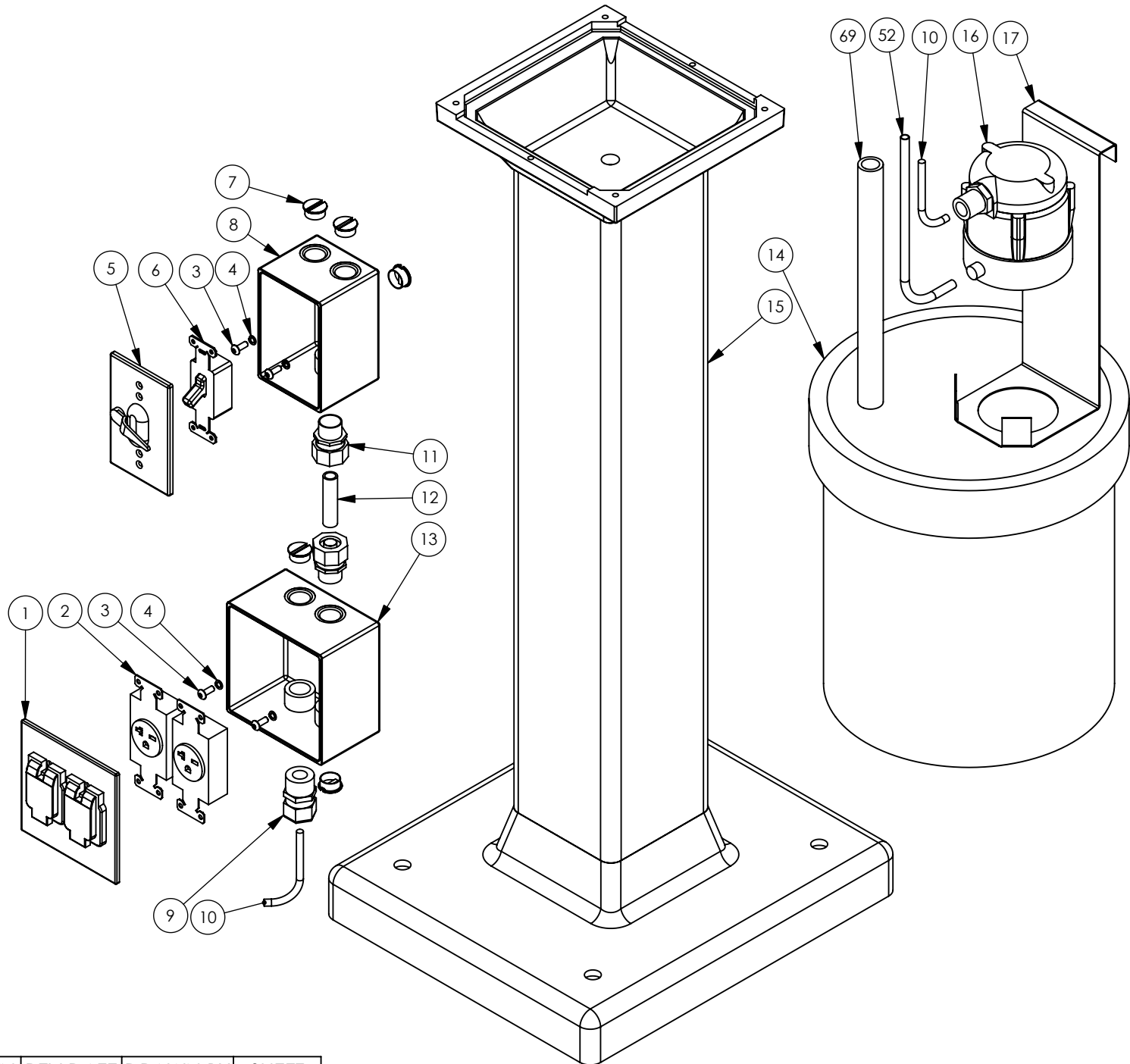


TITLE	DATE DRAWN	REV DATE	DRAWN BY	SHEET
M960-401	9/25/2009		CMW	4 OF 6

# 220 SET UP

BURR KING

1220 TAMARA LANE  
WARSAW, MO. 65355



TITLE	DATE DRAWN	REV DATE	DRAWN BY	SHEET
M960-401	9/25/2009		CMW	5 OF 6

**115V SET UP**

ITEM NO.	PART NUMBER	DESCRIPTION	QTY.
1	9952	COVER, 2 GANG RAYNTITE,5045-0	1
2	9951	SWITCH, ROCKER, 15A, 120V,	1
3	9950	RECEPTACLE, GFI, DUPLEX, 120V	1
4	15	WASHER, 5/16 LOCK, SPLIT	2
5	9	SCREW, 10-24x1/2 BH, BLK OXIDE	2
6	9902	PLUG, 1/2" CONDUIT	3
7	3326	BOX, WP, 2 GANG, DEEP	1
8	3356	RELEIF, STRAIN, 1/2"	1
9	015	CORD	2
10	3317	PAIL, 5 GAL. PLASTIC, BLACK	1
11	02	PEDESTAIL	1
12	3316-3	PUMP, WATER/120V/1PH/60HZ	1
13	3331	BRACKET, PUMP HANGER	1
52	3408	TUBING, CLEAR, FLEXIBLE, 1/4 ID	1
69	3409	HOSE, STL. REINF. 5/8 ID VIN	1

**220V SET UP**

ITEM NO.	PART NUMBER	DESCRIPTION	QTY.
1	3567-2	COVER, 2 GANG, 2 SGL, RCPT, WP	1
2	3329-1	RECP, 20A SINGLE 250V	2
3	9	SCREW, 10-24x1/2 BH, BLK OXIDE	4
4	15	WASHER, #10 LOCK	4
5	3325	COVER, SINGLE, LEVER, RAIN	1
6	3323	SWITCH, TOGGLE	1
7	9902	PLUG, 1/2" CONDUIT	5
8	3354	BOX, WP, SINGLE, DEEP	1
9	3356	RELEIF, STRAIN, 1/2"	1
10	017	CORD	2
11	775	CONNECTOR, 3/8" STR, LIQ. TIGHT	2
12	020	CONDUIT, 3/8", LIQ. TIGHT	1
13	3326	BOX, WP, 2 GANG, DEEP	1
14	3317	PAIL, 5 GAL. PLASTIC, BLACK	1
15	02	PEDESTAIL	1
16	3316-1	PUMP, WATER, 220V/1PH/50-60HZ	1
17	3331	BRACKET, PUMP HANGER	1
52	3408	TUBING, CLEAR, FLEXIBLE, 1/4 ID	1
69	3409	HOSE, STL. REINF. 5/8 ID VIN	1

TITLE	DATE DRAWN	REV DATE	DRAWN BY	SHEET
M960-401	9/25/2009		CMW	6 OF 6