

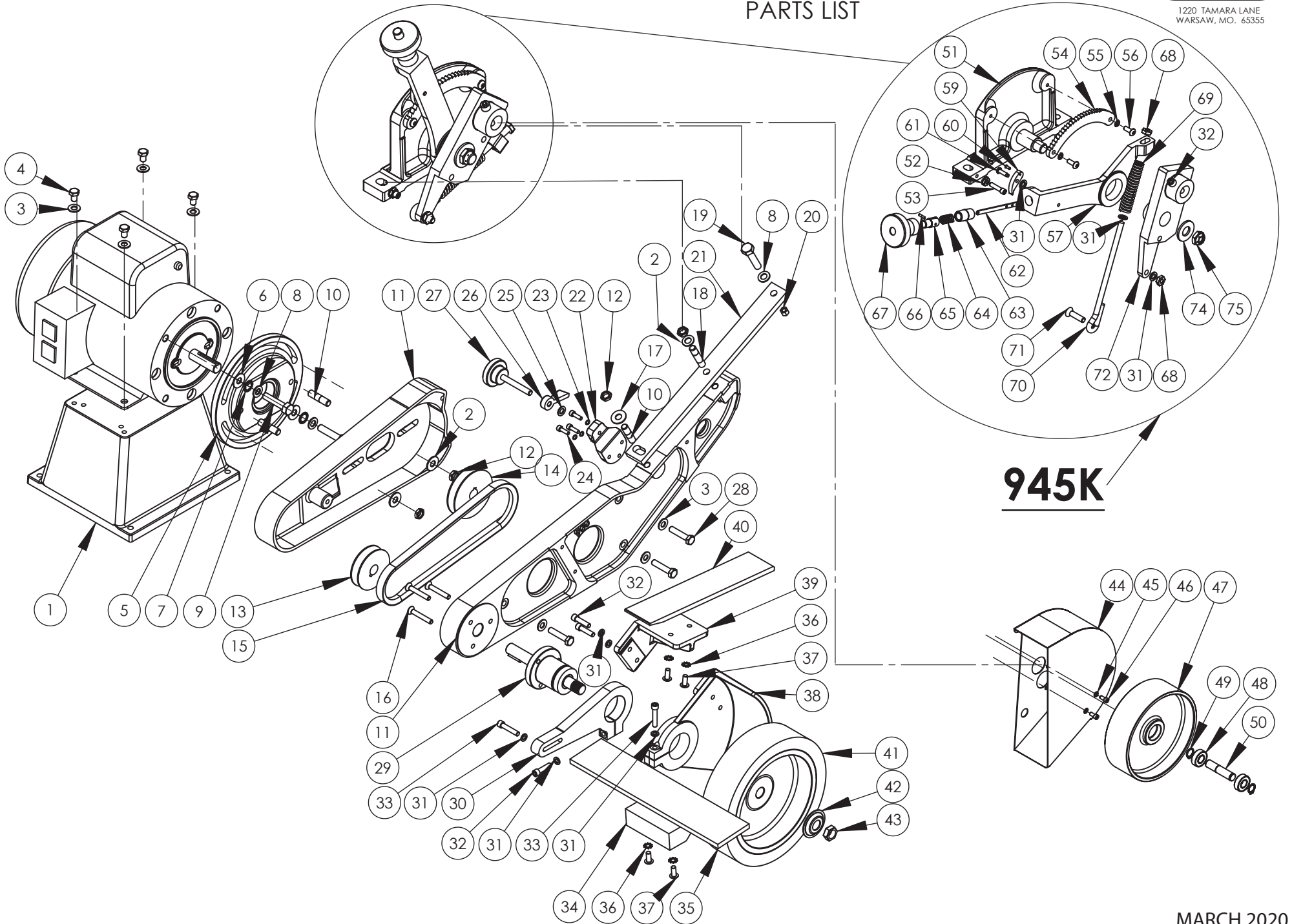
# MODEL 960-272

## 8" CONTACT WHEEL

### PARTS LIST

BURR KING

1220 TAMARA LANE  
WARSAW, MO. 65355



**945K**

## 960-272

ITEM NO.	PART NUMBER	DESCRIPTION	QTY.
1	941	BASE	1
2	7-0058	WASHER, 3/8 x 7/8	4
3	4	WASHER, 5/16 SAE ZINC PLTD	7
4	2	BOLT, 5/16-18x1 1/2 HEX HEAD	4
5	908	ADAPTER, C-FACE MOTOR	1
6	42	WASHER, SAE, 3/8	4
7	5-0014	WASHER, LOCK 3/8, INTERNAL STAR	2
8	17	WASHER, 960-616, AN	7
9	1-0003	BOLT 3/8-16 x 1 1/4 HEX HEAD	2
10	920	STUD 3/8"x1 1/2", DOUBLE	3
11	900A	FRAME/GUARD ASSEMB	1
12	22	NUT, 3/8-24, NYLON INSERT	4
13	725	PULLEY, 2 1/2	1
14	730	PULLEY, 3	1
15	429K	BELT, V DRIVE	1
16	6	SCREW 1/4-20 x 1 1/2 FH SOC	3
17	40	WASHER, SAE, 3/8	1
18	920K	STUD 3/8"x1 1/2", DOUBLE	1
19	1-0004	BOLT 3/8-16 x 1 1/4 HEX HEAD	1
20	4-0007	NUT, 3/8-16, ELASTIC LOCK GD 2	1
21	943	BAR, EXTENSION	1
22	923	BRACKET, TRACKING	1
23	5-0035	WASHER, #10, LOCK, HIGH COLLAR	3
24	2-0023	SCREW, 10-24 X .625 ALLEN HEAD	3
25	18	WASHER, 960-516, AN	1
26	922	LOCK, KNOB, TRACKING	1
27	921	KNOB, TRACKING ASSY	1
28	1-0019	BOLT, 5/16-18x1 1/2 HEX HEAD	3
29	701	HOUSING, BEARING, w/keyway	1
30	916-1	ARM, WORKREST SUPPORT	1
31	5	WASHER, 1/4 AN	8
32	30	SCREW 1/4-20x1 SHCS	4
33	31	SCREW 1/4-20x1 1/4 SHCS	2
34	917	WORKREST	1
35	966-01	REST EXTENDER	1
36	5-0008	WASHER, 1/4, LOCK, EXTERNAL	4
37	2-0046	SCREW, 1/4-28x1/2 BH, BLK OX	4
38	903K	GUARD, CONTACT WHEEL	1
39	904BK	BRACKEN, PLATEN	1
40	964-01	PLATEN, MAIN 272	1
41	902	WHEEL, CONTACT	1
42	726	FLANGE, OUTER WHEEL	1
43	727	NUT, 5/8-18 RH, JAM, BRT PLT	1
44	912	GUARD, IDLER WHEEL	1
45	5-0032	WASHER, 1/4, LOCK, SPLIT, PLTD	2
46	1431	SCREW, 1/4-20 x 1/2 ALLEN HEAD	2
47	907K	WHEEL, IDLER, w/Brg. & Shaff	1
48	701B	BEARING	1
49	701F	RING, RETAINING 5/8 EXT.	2
50	707c	SHAFT, BEARING	1

## 945K

ITEM NO.	PART NUMBER	DESCRIPTION	QTY.
51	934	SUPPORT, REAR WHL, w/STUD	1
52	14	NUT, 10-24, KEP	1
53	13	SCREW, 10-24 x 3/4, SOC, HD, CAP	1
54	736	SECTOR	1
55	15	WASHER, 5/16 LOCK, SPLIT	2
56	9	SCREW, 10-24x1/2 BH, BLK OXIDE	2
57	937G	HANDLE	1
59	737F	PAWL	1
60	28	SCREW, DRIVE, #2 x 1/4	1
61	27	SCREW, DRIVE, #8 X 5/8	1
62	937C	STRIP, HANDLE	1
63	737E	NIPPLE, PIPE	1
64	737D	SPRING, BUTTON	1
65	737B-1	BUTTON	1
66	26	PIN, 3/32 x 3/8, ROLL PLTED	1
67	737A	KNOB, REAR TENSION ARM	1
68	3	NUT, 1/4-20 JAM, PLTD	2
69	738	SPRING, BELT TENSION	1
70	939	GUIDE, SPRING	1
71	34	SCREW, 1/4-20 X 1, FH PHILLIPS	1
72	935	SUPPORT, REAR WHEEL	1
74	21	WASHER, 1/2 ID	1
75	20	NUT, NYLOK JAM, 1/2-20	1

Burr King

1220 TAMARA LANE  
WARSAW, MO. 65355

MARCH 2020

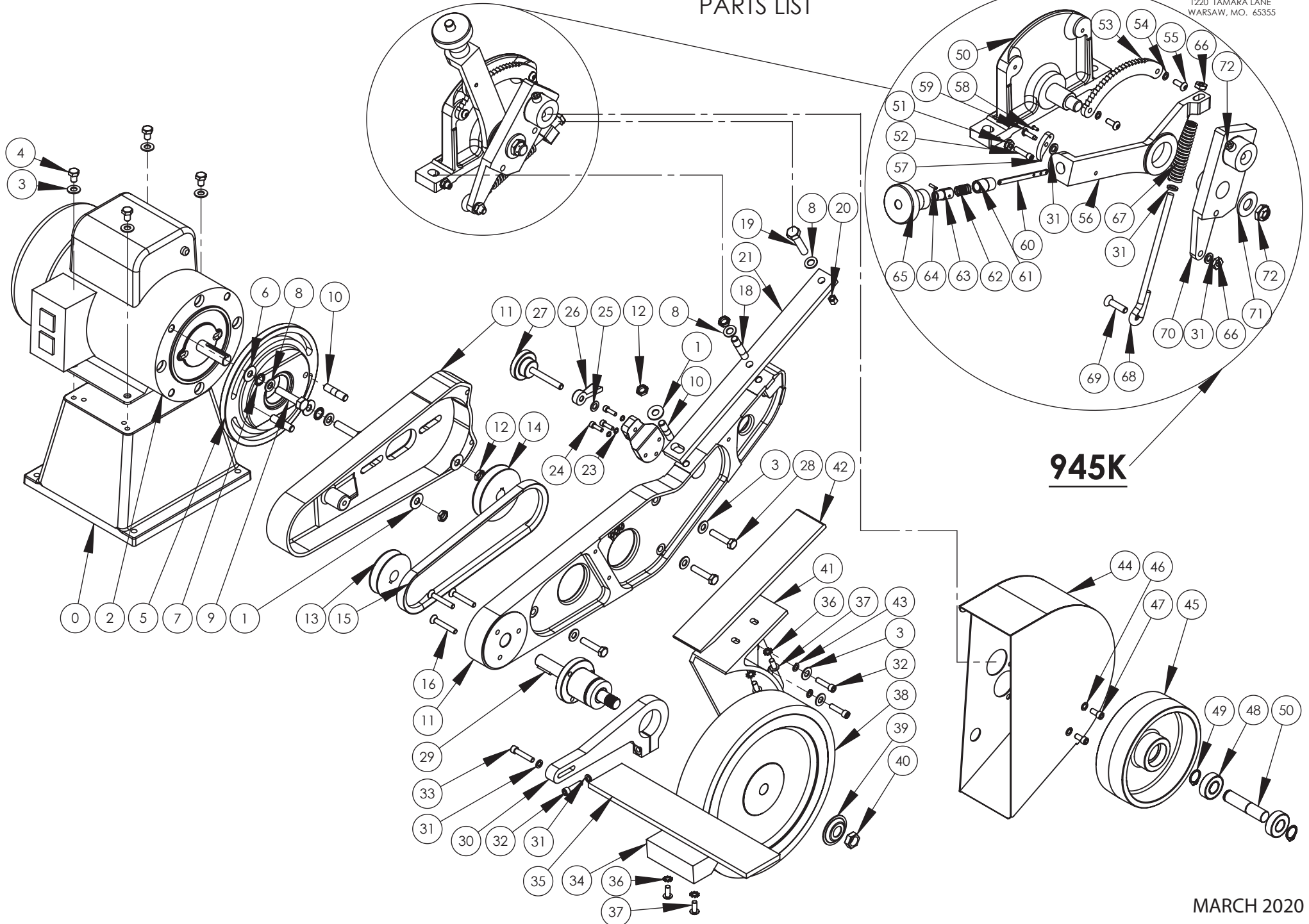
# MODEL 960-272

## 10" CONTACT WHEEL

### PARTS LIST

BURR KING

1220 TAMARA LANE  
WARSAW, MO. 65355



MARCH 2020

960-272			
ITEM NO.	PART NUMBER	DESCRIPTION	QTY.
0	941	BASE	1
1	7-0058	WASHER, 3/8 X 7/8	4
2	MOTOR	CALL FACTORY *	1
3	4	WASHER, 5/16 SAE ZINC PLTD	9
4	2	BOLT, 5/16-18x1 1/2 HEX HEAD	4
5	908	ADAPTER, C-FACE MOTOR	1
6	42	WASHER, SAE, 3/8	2
7	5-0014	WASHER, LOCK 3/8, INTERNAL STAR	2
8	17	WASHER, 960-616, AN	7
9	1-0003	BOLT 3/8-16 x 1 1/4 HEX HEAD	2
10	920	STUD 3/8"x1 1/2", DOUBLE	3
11	900A	FRAME/GUARD ASSEMB	1
12	22	NUT, 3/8-24, NYLON LOCK	4
13	725	PULLEY, 2 1/2	1
14	730	PULLEY, 3	1
15	429K	BELT, V DRIVE	1
16	6	SCREW 1/4-20 x 1 1/2 FH SOC	3
17	40	WASHER, SAE, 3/8	1
18	920K	STUD 3/8"x1 1/2", DOUBLE	1
19	1-0004	BOLT 3/8-16 x 1 1/4 HEX HEAD	1
20	4-0007	NUT, 3/8-16, ELASTIC LOCK GD 2	1
21	943	BAR, EXTENSION	1
22	923	BRACKET, TRACKING	1
23	5-0035	WASHER, #10, LOCK, HIGH COLLAR	3
24	2-0023	SCREW, 10-24 X .625 ALLEN HEAD	3
25	18	WASHER, 960-516, AN	1
26	922	LOCK, KNOB, TRACKING	1
27	921	KNOB, TRACKING ASSY	1
28	1-0019	BOLT, 5/16-18x1 1/2 HEX HEAD	3
29	701	BEARING, CONTACT WHEEL ASSY	1
30	948K	ARM, WORKREST SUPPORT	1
31	5	WASHER, 1/4 AN	5
32	30	SCREW 1/4-20x1 SHCS	3
33	31	SCREW 1/4-20x1 1/4 SHCS	1
34	706-1M	WORKREST	1
35	966-01	REST EXTENDER	1
36	5-0008	WASHER, 1/4, LOCK, EXTERNAL	4
37	2-0046	SCREW, 1/4-28x1/2 BH, BLK OX	4
38	1002	WHEEL, CONTACT	1
39	726	FLANGE, OUTER WHEEL	1
40	727	NUT, 5/8-18 RH, JAM, BRT PLT	1
41	913	GUARD, 10" DRIVE WHEEL	1
42	964-01	PLATEN, MAIN 272	1

960-272			
ITEM NO.	PART NUMBER	DESCRIPTION	QTY.
43	5-0032	WASHER, 1/4, LOCK, SPLIT, PLTD	4
44	912	GUARD, IDLER WHEEL	1
45	707	IDLER WHEEL 6 X 2, w/BRGS & SHAFT ALUM.	1
46	1431	SCREW, 1/4-20 X 1/2 ALLEN HEAD	2
47	701B	BEARING	2
48	701F	WHEEL, IDLER CIR-CLIP	2
49	707c	SHAFT, BEARING	1

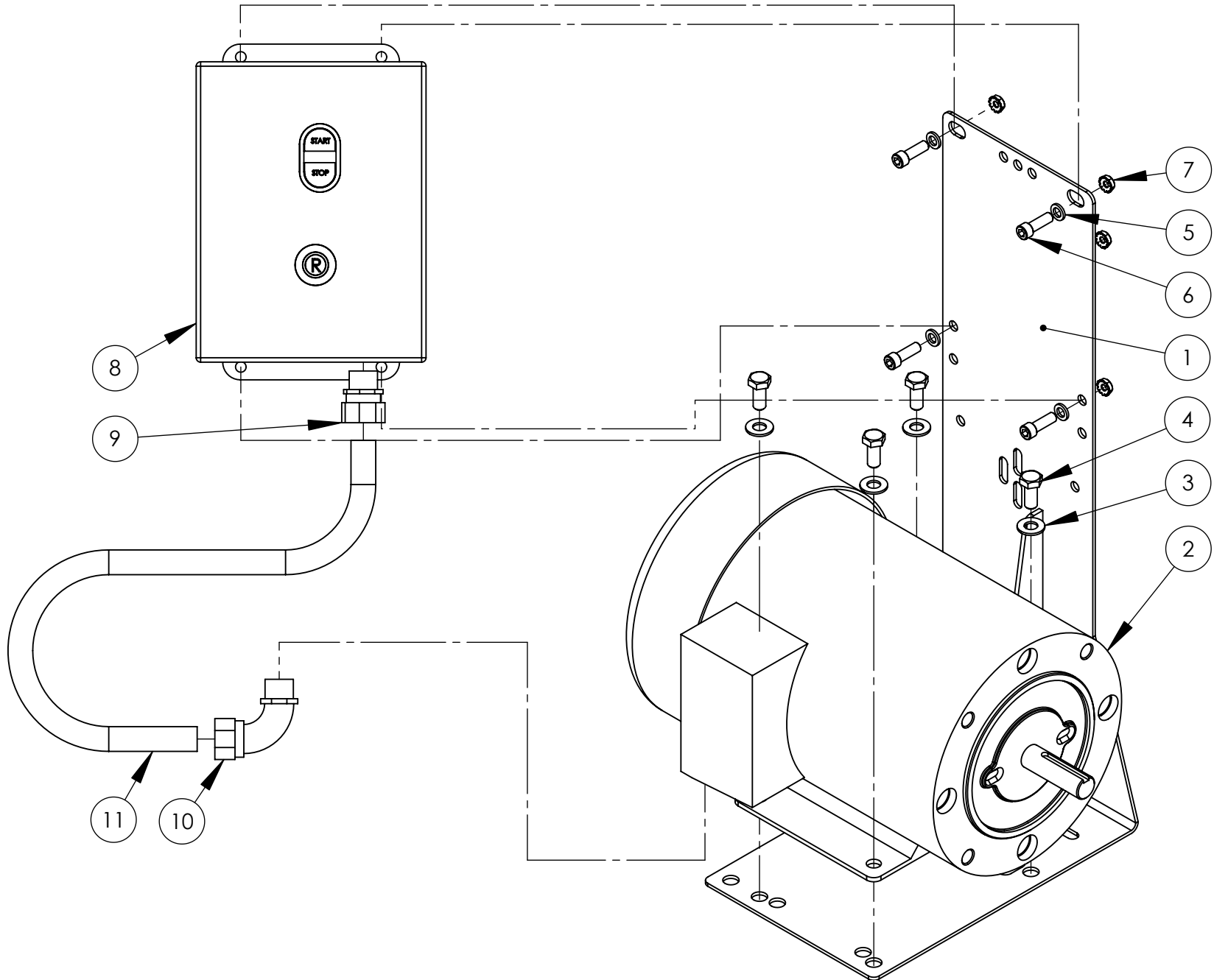
945K			
ITEM NO.	PART NUMBER	DESCRIPTION	QTY.
50	934	SUPPORT, REAR WHL, w/STUD	1
51	14	NUT, 10-24, KEP	1
52	13	SCREW, 10-24 x 3/4, SOC, HD, CAP	1
53	736	SECTOR	1
54	15	WASHER, 5/16 LOCK, SPLIT	2
55	9	SCREW, 10-24x1/2 BH, BLK OXIDE	2
56	937G	HANDLE	1
57	737F	PAWL	1
58	28	SCREW, DRIVE, #2 x 1/4	1
59	27	SCREW, DRIVE, #8 X 5/8	1
60	937C	STRIP, HANDLE	1
61	737E	NIPPLE, PIPE	1
62	737D	SPRING, BUTTON	1
63	737B-1	BUTTON	1
64	26	PIN, 3/32 x 3/8, ROLL PLTD	1
65	737A	KNOB, REAR TENSION ARM	1
66	3	NUT, 1/4-20 JAM, PLTD	2
67	738	SPRING, BELT TENSION	1
68	939	GUIDE, SPRING	1
69	34	SCREW, 1/4-20 X 1, FH PHILLIPS	1
70	935	SUPPORT, REAR WHEEL	1
71	21	WASHER, 1/2 ID	1
72	20	NUT, NYLON JAM, 1/2-20	1

# MAG STARTER

## PARTS LIST

BURR KING

1220 TAMARA LANE  
WARSAW, MO. 65355



<b>MAG STARTER</b>			
<b>ITEM NO.</b>	<b>PART NUMBER</b>	<b>DESCRIPTION</b>	<b>QTY.</b>
1	MB-4C	BRACKET, MOUNTING, STARTER	1
2	MOTOR	CALL FACTORY FOR PART NUMBER	1
3	4	WASHER, 5/16 SAE ZINC PLTD	4
4	37	BOLT, 5/16-18x3/4 HEX HEAD	4
5	5	WASHER, 1/4 AN	4
6	209	SCREW, 1/4-20 X 3/4 ALLEN HEAD	4
7	4-0013	NUT, KEP, 1/4-20	4
8	MS2A3 MS4A3 MS2B3 MS4B3	3/4HP-1HP, 220V 3/4HP-1HP, 440V 1.5HP-3HP, 220V 1.5HP-3HP, 440V	1
9	775	CONNECTOR, 3/8", STR, LIQ. TIGHT	1
10	776	CONNECTOR, 3/8", 90 DEG, LIQ. TIGHT	1
11	020	CONDUIT 3/8" LIQUID TIGHT	1

# VARI SPEED

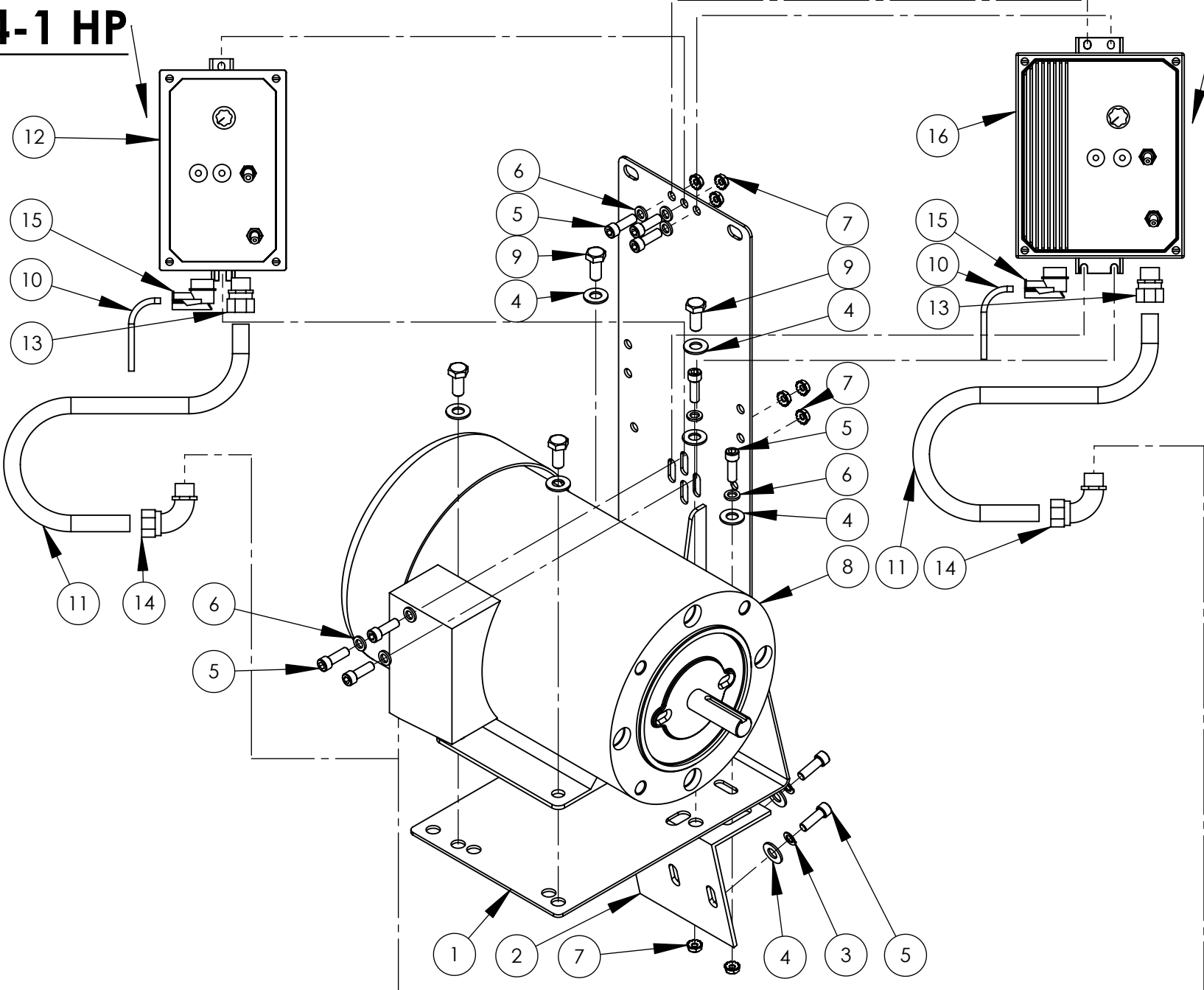
SINGLE PHASE



1220 TAMARA LANE  
WARSAW, MO. 65355

**3/4-1 HP**

**1.5-3 HP**



<b>VARI SPEED</b>			
<b>ITEM NO.</b>	<b>PART NUMBER</b>	<b>DESCRIPTION</b>	<b>QTY.</b>
1	MB-4C	BRACKET, MOUNTING, STARTER	1
2	941-3	BRACE, MB4 SUPPORT	1
3	5-0032	WASHER, 1/4, LOCK, SPLIT, PLTD	2
4	4	WASHER, 5/16 SAE ZINC PLTD	8
5	209	SCREW, 1/4-20 X 3/4 ALLEN HEAD	10
6	5	WASHER, 1/4 AN	8
7	4-0013	NUT, KEP, 1/4-20	8
8	100B-1725C 150B-1725C	1 HP MOTOR 1.5 HP MOTOR	1
9	37	BOLT, 5/16-18x3/4 HEX HEAD	4
10	015-1 017	120V CORD 220V CORD	1
11	020	CONDUIT 3/8" LIQUIDTIGHT	1
12	864-1	CONT. 115/220V 0.75-1HP	1
13	775	CONNECTOR, 3/8" STR, LIQ. TIGHT	1
14	776	CONNECTOR, 3/8", 90 DEG, LIQ. TIGHT	1
15	643	RELIEF, STRAIN 3/8" 90 DEG	1
16	862-3	CONT. 115/220V 1.5-3HP	1

**NOTE**

FOR 3 PHASE CONTROLLER CALL FACTORY.

**CE CERTIFICATION PART NUMBERS**

**ADD TO CONTROLLER**

<b>ITEM NO.</b>	<b>PART NUMBER</b>	<b>DESCRIPTION</b>	<b>QTY.</b>
12	9974-6	LINE FILTER	1
16	9974-5	LINE FILTER	1
<b>CHANGE PART</b>			
15	3356	RELIEF, STRAIN	1
10	CE CORD	NO PLUG- CUSTOMER INSTALLED PLUG	1



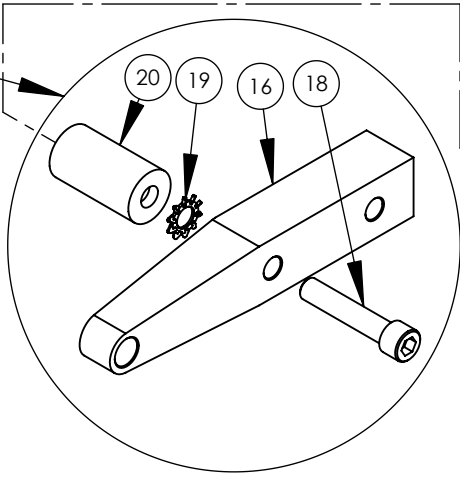
# OPTIONAL ATTACHMENTS

# 944 PARTS LIST

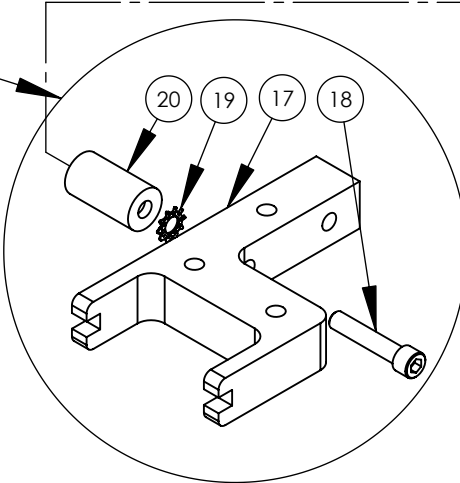
BURR KING

1220 TAMARA LANE  
WARSAW, MO. 65355

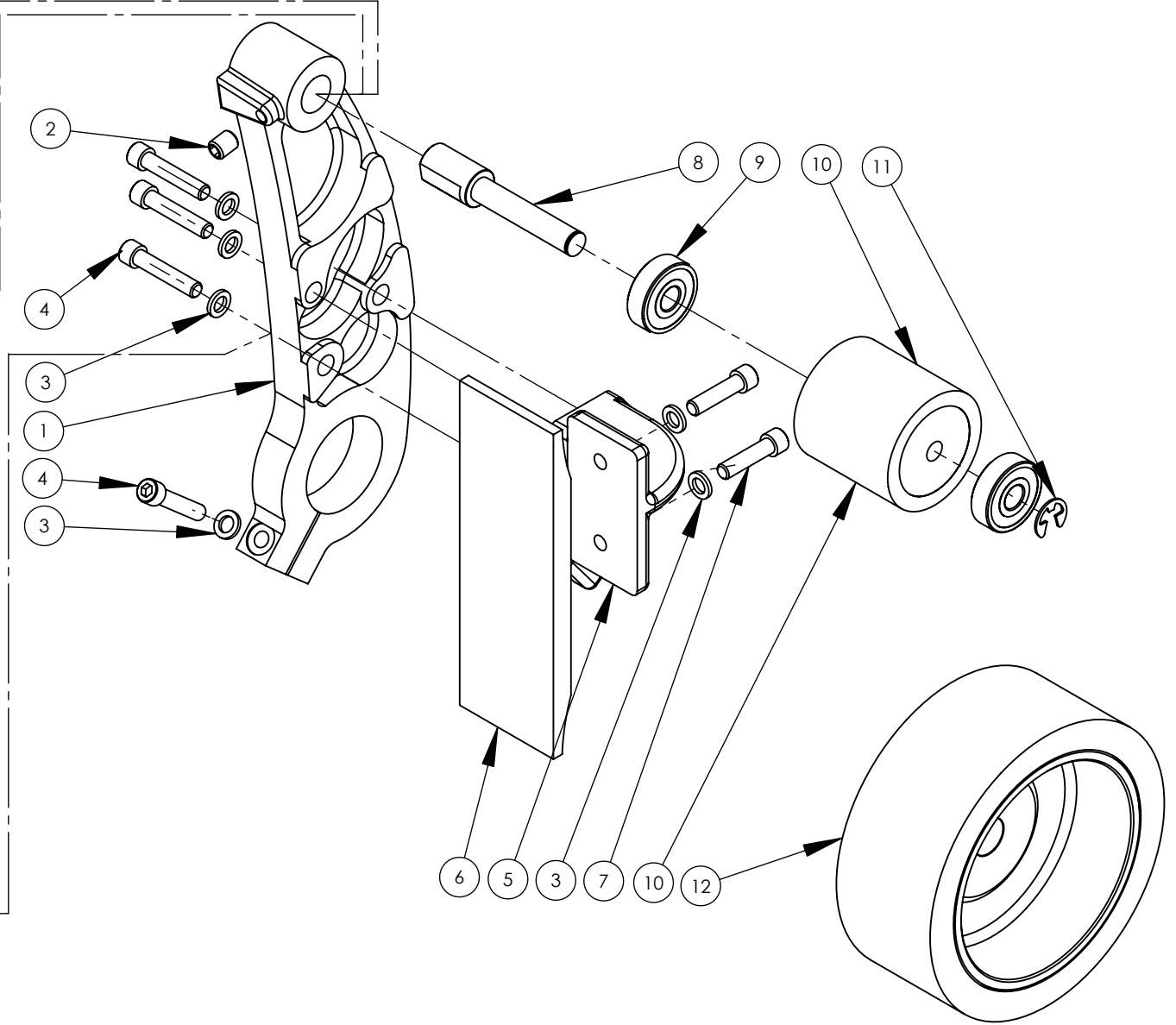
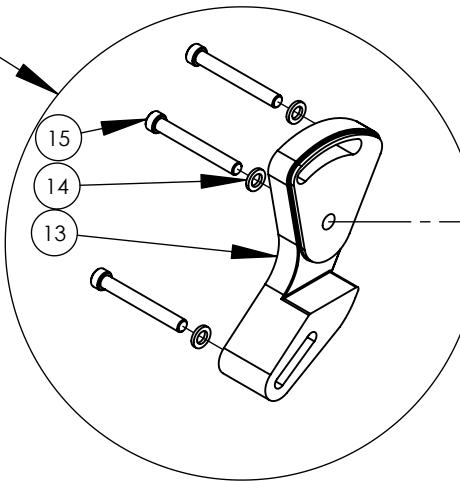
1276



1277



946K



<b>944</b>			
<b>ITEM NO.</b>	<b>PART NUMBER</b>	<b>DESCRIPTION</b>	<b>QTY.</b>
1	9066	ARM, MAIN ATTACHMENT	1
2	25	SCREW, SET, 5/16-18 X 3/8, ALLEN	1
3	5	WASHER, 1/4 AN	6
4	31	SCREW 1/4-20x1 1/4 SHCS	4
5	904B-5	BRACKET, PLATEN	1
6	904AKM	PLATEN	1
7	30	SCREW 1/4-20x1 SHCS	2
8	1444A	SHAFT, IDLER	1
9	202B	BEARING	2
10	202K	WHEEL, CONTACT 2x2 w/Brg. & Shaft	1
11	1454	RING, RETAINING, E STYLE	1
12	402	CONTACT WHL, 5x2	1

**NOTE**

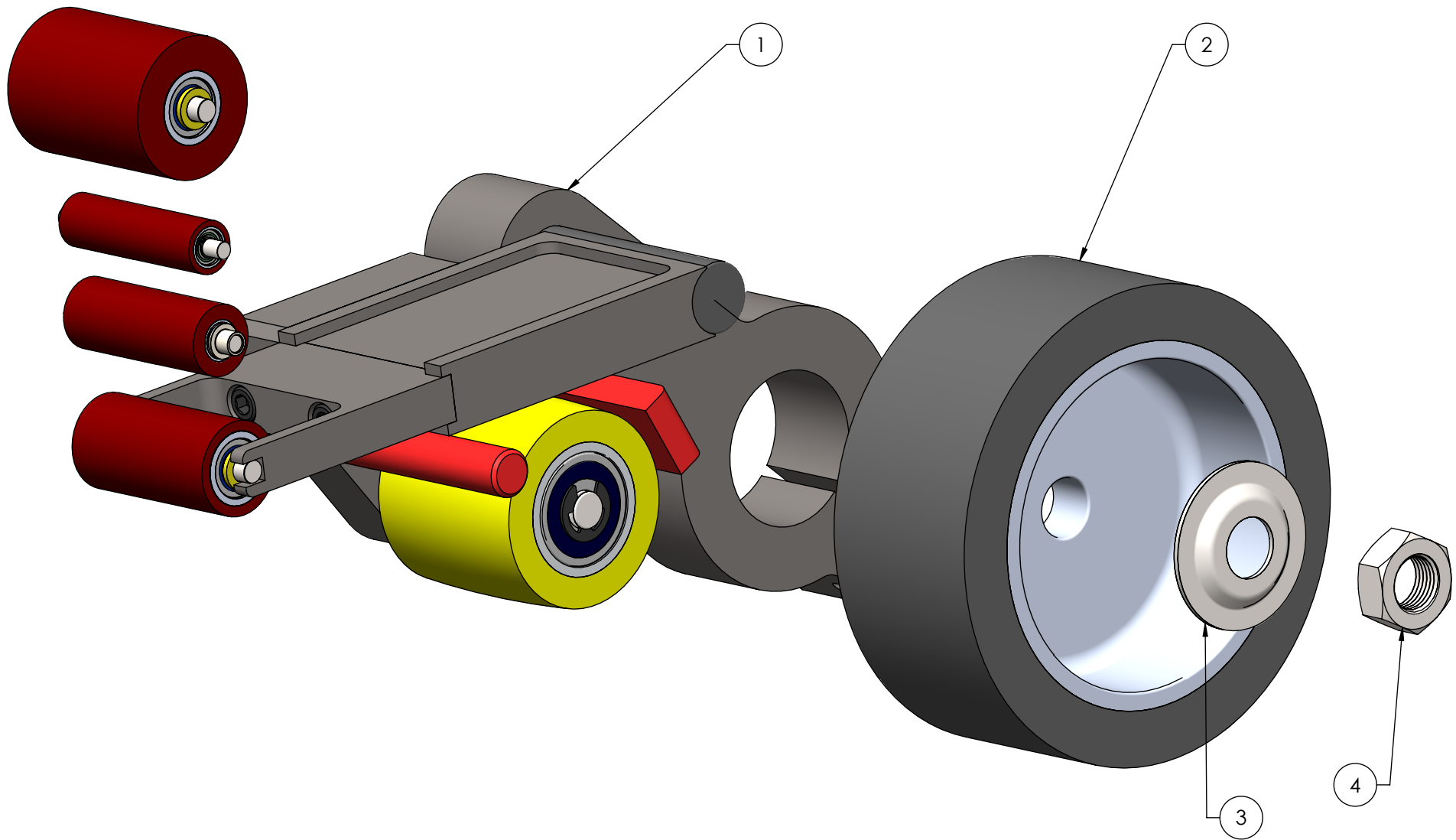
TO USE 944 MUST HAVE 907K IDLER WHEEL.

**OPTIONAL ATTACHMENTS**

<b>946K</b>			
<b>ITEM NO.</b>	<b>PART NUMBER</b>	<b>DESCRIPTION</b>	<b>QTY.</b>
13	946KM	ARM	1
14	5	WASHER, 1/4 AN	3
15	2-0062	SCREW, 1/4-20 X 1.5 ALLEN	3

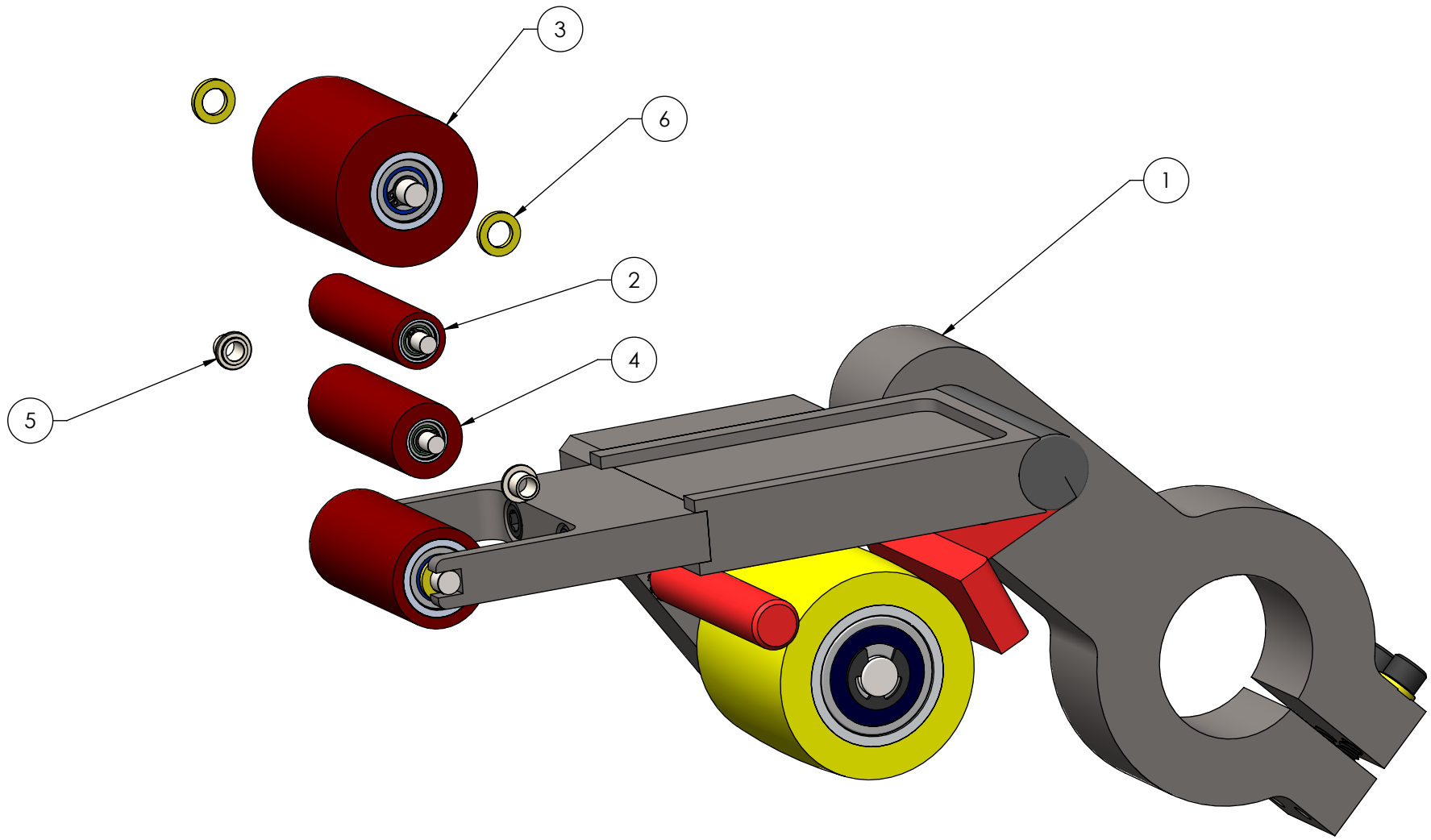
USE TO ATTACH WORKREST TO 944

<b>1276 &amp; 1277</b>			
<b>ITEM NO.</b>	<b>PART NUMBER</b>	<b>DESCRIPTION</b>	<b>QTY.</b>
16	1276B	ARM, UNI 1x1	1
17	1277B	ARM, FORK 1x2	1
18	31	SCREW 1/4-20x1 1/4 SHCS	2
19	5-0008	WASHER, 1/4, LOCK, EXTERNAL	2
20	1277A	STUD	2



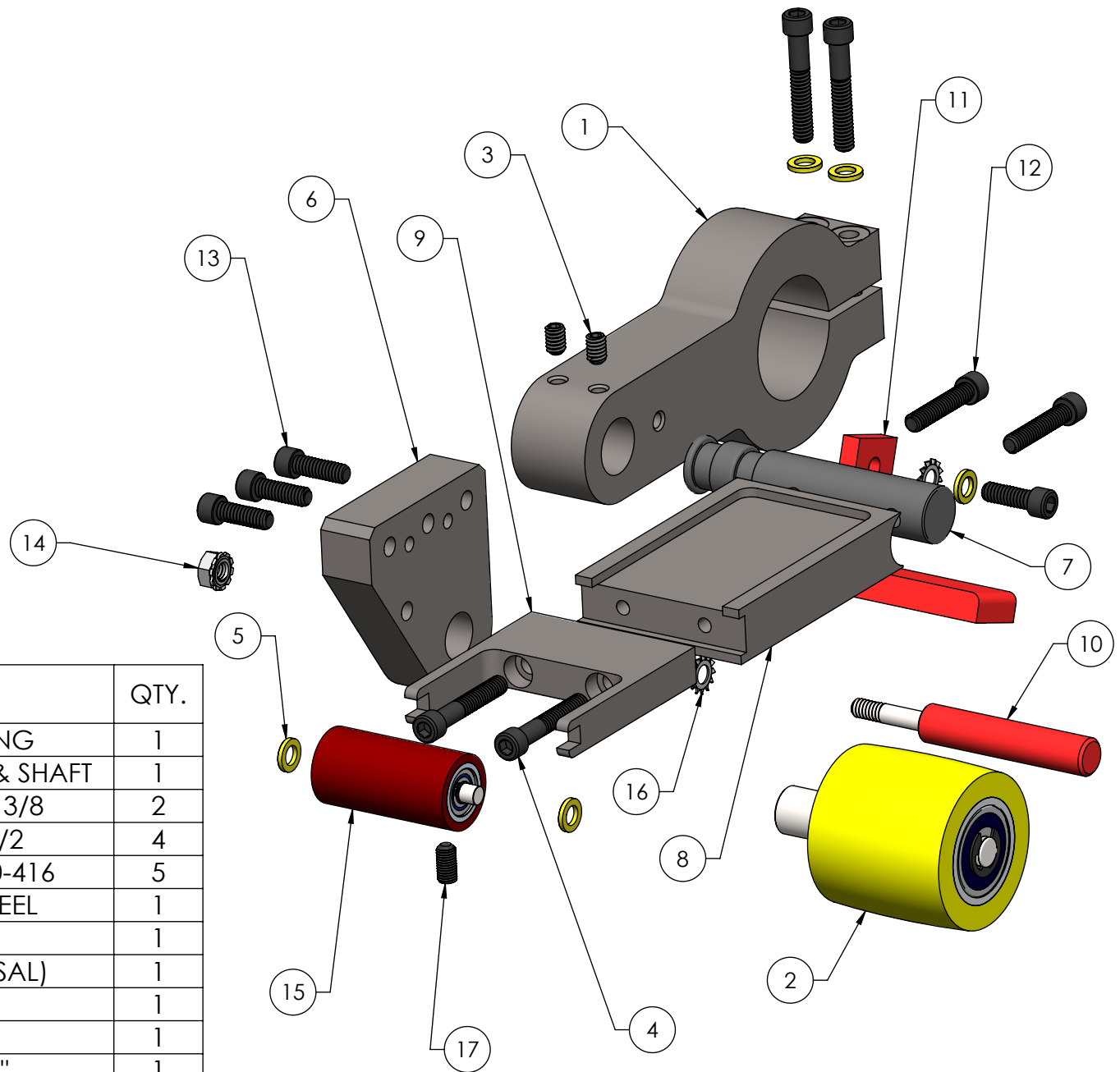
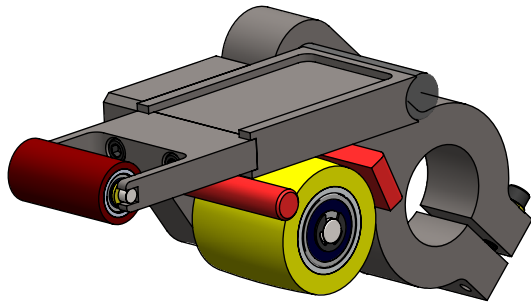
ITEM NO.	PART NUMBER	DESCRIPTION	QTY.
1	965-1	ATT. SM. WHL. INBOARD	1
2	402	WHEEL,CONT. 5 x 2 55D.	1
3	726	FLANGE, OUTER WHEEL	1
4	727	NUT, 5/8-18 JAM	1

<b>BURR KING</b>		1220 TAMARA LANE WARSAW, MO 65355	
		PH: 660-438-8998 800-621-2748 FAX: 660-438-8991 E-MAIL: info@burrking.com	
STANDARD TOLERANCES	TITLE:	ATT. SM. WHL. W/402 I.B.	
X.X = ±0.06	PART NO.	965	
X.X X = ±0.01	DRWN BY: KDE	DATE DRAWN: 12/21/2018	
X.X X X = ±0.005			
ANGLE = ±1/2°			
		SHEET	1 OF 1
		REV.	A



ITEM NO.	PART NUMBER	DESCRIPTION	QTY.
1	965-1M	ATTACH. SM. WHL.W/O 402	1
2	AP2311	WHEEL,CONT. 9/16x2 70D.	1
3	AQ2311	WHEEL,CONT. 1 1/2x2 70D.	1
4	AO2311	WHEEL,CONT. 3/4x2 70D.	1
5	1436	BUSHING,AXLE 3/16 x 1/4	2
6	5	WASHER, 1/4" AN960-416	2

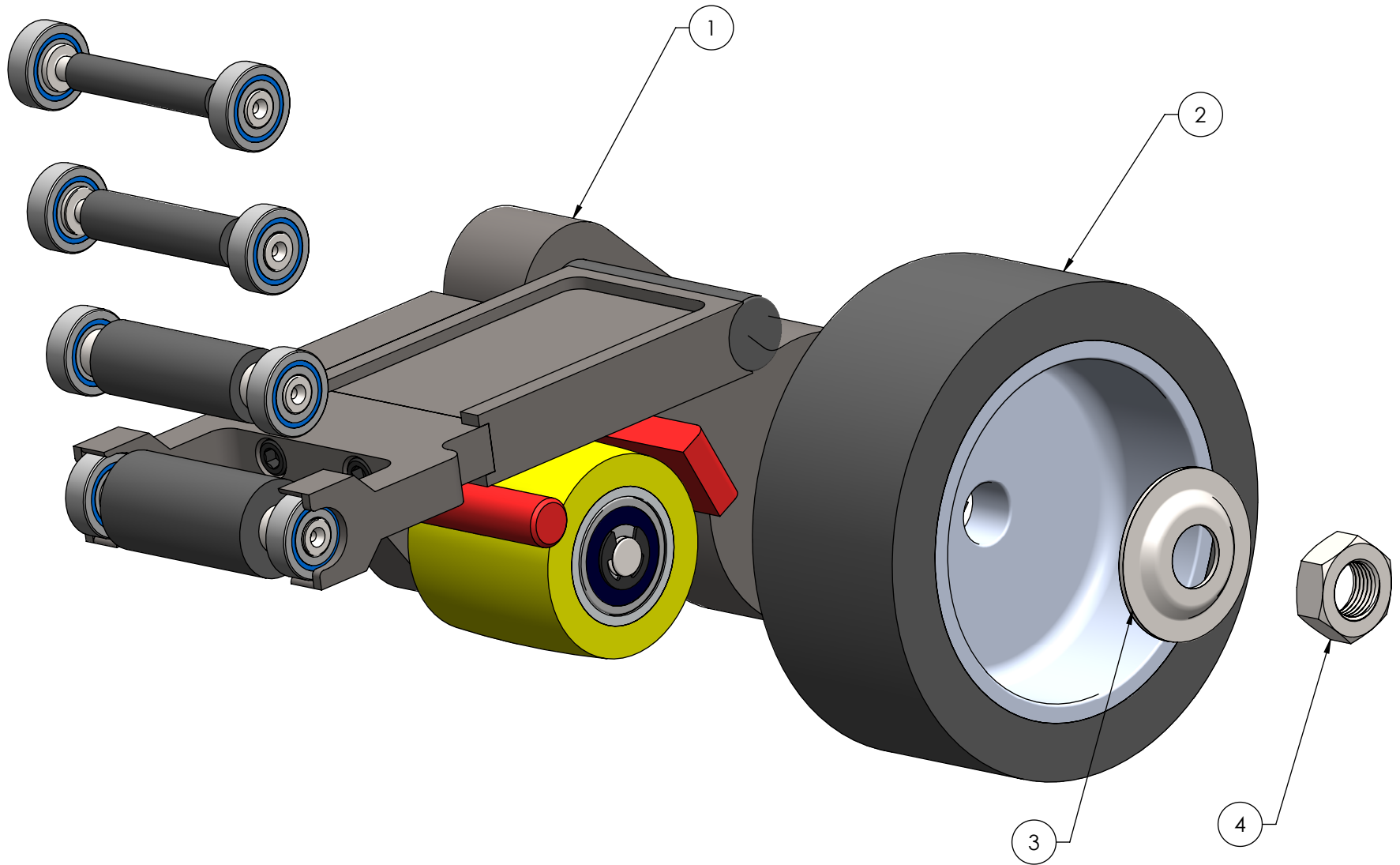
		1220 TAMARA LANE WARSAW, MO 65355 PH: 660-438-8998 800-621-2748 FAX: 660-438-8991 E-MAIL: info@burrking.com	
		STANDARD TOLERANCES X.X = ±0.06 X.X X = ±0.01 X.X X X = ±0.005 ANGLE = ±1/2°	TITLE: <b>ATT. SM. WHL. INBOARD</b>
PART NO. <b>965-1</b>		REV. <b>A</b>	
DRAWN BY: KDE		DATE DRAWN: 12/21/2018	



ITEM NO.	PART NUMBER	DESCRIPTION	QTY.
1	1425	BRACKET, MOUNTING	1
2	1444	WHEEL, IDLER W/BRGS. & SHAFT	1
3	1445	SETSCREW, 1/4-20 x 3/8	2
4	2-0011	SHCS, 1/4-20 x 1 1/2	4
5	5	WASHER, 1/4" AN960-416	5
6	9651	SUPPORT, IDLER WHEEL	1
7	1426	BAR, PIVOT	1
8	9655	BASE, ARM (UNIVERSAL)	1
9	9657	ARM ADAPTER	1
10	9652	GUARD, PINCH	1
11	9653	GUARD, PINCH "L"	1
12	31	SHCS 1/4-20 X 1 1/4	2
13	209	SHCS 1/4-20 X 3/4	4
14	4-0013	NUT, 1/4"-20 KEP	1
15	AR2311	WHEEL, CONTACT 1x2 70D.	1
16	5-0008	WASHER, LOCK, EXTERNAL 1/4	2
17	1441	SETSCREW, 1/4-28 x 1/2	1

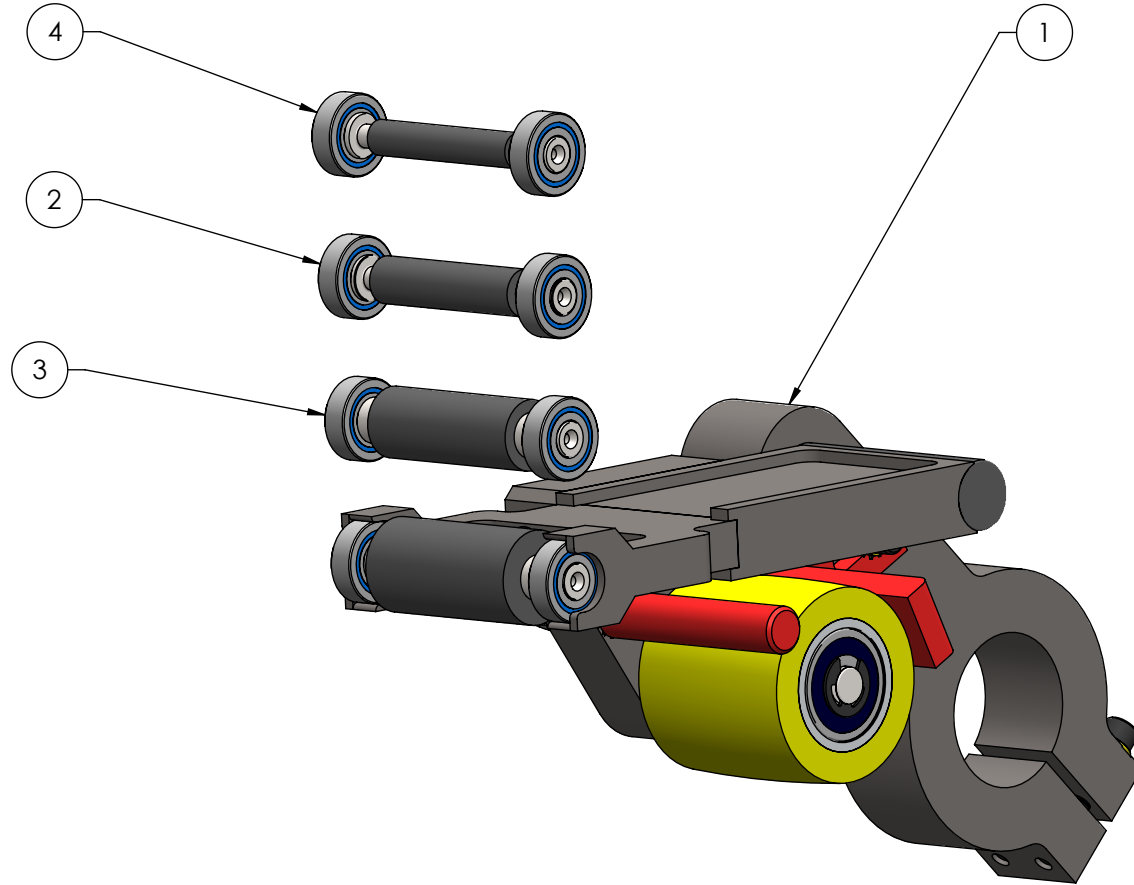
1220 TAMARA LANE  
 WARSAW, MO 65355  
 PH: 660-438-8998  
 800-621-2748  
 FAX: 660-438-8991  
 E-MAIL: info@burrking.com

STANDARD TOLERANCES	TITLE: ATTACH. SM. WHL.W/O 402	SHEET 1 OF 1
X.X = ±0.06	PART NO. 965-1M	REV. A
X.X X = ±0.01	DRAWN BY: KDE	DATE DRAWN: 12/21/2018
X.X X X = ±0.005		
ANGLE = ±1/2°		




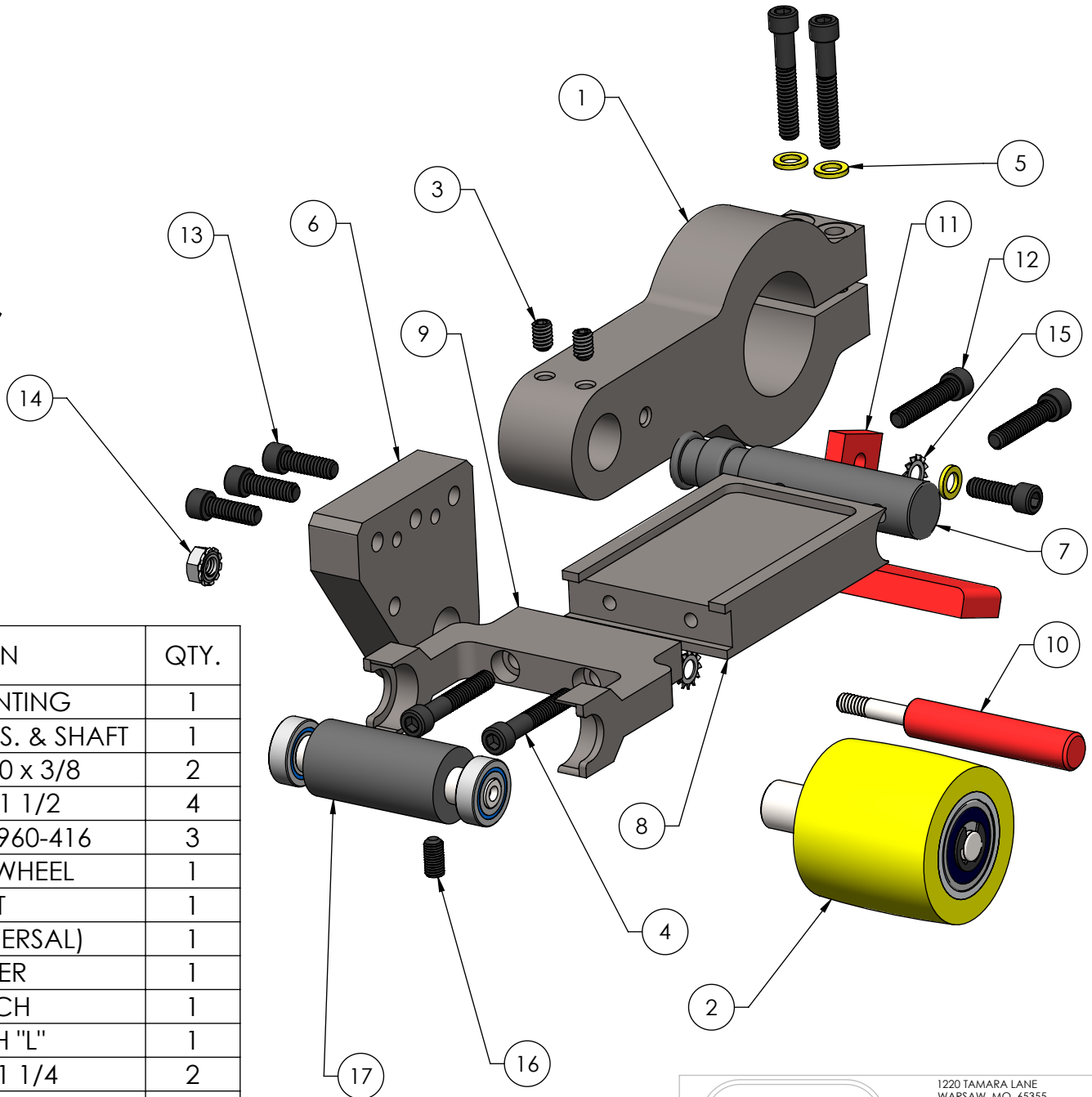
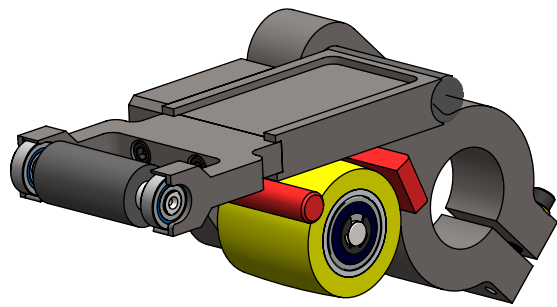
ITEM NO.	PART NUMBER	DESCRIPTION	QTY.
1	965-5	ATT. SM. WHL. OUTBOARD	1
2	402	WHEEL,CONT. 5 x 2 55D.	1
3	726	FLANGE, OUTER WHEEL	1
4	727	NUT, 5/8-18 JAM	1

		1220 TAMARA LANE WARSAW, MO 65355 PH: 660-438-8998 800-621-2748 FAX: 660-438-8991 E-MAIL: info@burrking.com	
		STANDARD TOLERANCES X.X = ±0.06 X.X X = ±0.01 X.X X X = ±0.005 ANGLE = ±1/2°	TITLE: <b>ATT. SM. WHL. W/402 O.B.</b> PART NO. <b>965-4</b> DRAWN BY: KDE



ITEM NO.	PART NUMBER	DESCRIPTION	QTY.
1	965-4M	ATTACH. SM. WHL.W/O 402	1
2	OB500	WHEEL CONT. 1/2 x 2 55D.	1
3	OB750	WHEEL,CONT. 3/4 x 2 55D.	1
4	OB375	WHEEL CONT. 3/8 x 2 55D.	1

		1220 TAMARA LANE WARSAW, MO 65355 PH: 660-438-8998 800-621-2748 FAX: 660-438-8991 E-MAIL: info@burrking.com	
		STANDARD TOLERANCES X.X = ±0.06 X.X X = ±0.01 X.X X X = ±0.005 ANGLE = ±1/2°	TITLE: <b>ATT. SM. WHL. OUTBOARD</b> PART NO. <b>965-5</b> DRAWN BY: KDE



ITEM NO.	PART NUMBER	DESCRIPTION	QTY.
1	1425	BRACKET, MOUNTING	1
2	1444	WHEEL, IDLER W/BRGS. & SHAFT	1
3	1445	SETSCREW, 1/4-20 x 3/8	2
4	2-0011	SHCS, 1/4-20 x 1 1/2	4
5	5	WASHER, 1/4" AN960-416	3
6	9651	SUPPORT, IDLER WHEEL	1
7	1426	BAR, PIVOT	1
8	9655	BASE, ARM (UNIVERSAL)	1
9	9660	ARM ADAPTER	1
10	9652	GUARD, PINCH	1
11	9653	GUARD, PINCH "L"	1
12	31	SHCS 1/4-20 X 1 1/4	2
13	209	SHCS 1/4-20 X 3/4	4
14	4-0013	NUT, 1/4"-20 KEP	1
15	5-0008	WASHER, LOCK, EXTERNAL 1/4	2
16	1441	SETSCREW, 1/4-28 x 1/2	1
17	OB1000	WHEEL, CONT. 1 x 2 55D.	1

1220 TAMARA LANE  
 WARSAW, MO 65355  
 PH: 660-438-8998  
 800-621-2748  
 FAX: 660-438-8991  
 E-MAIL: info@burrking.com

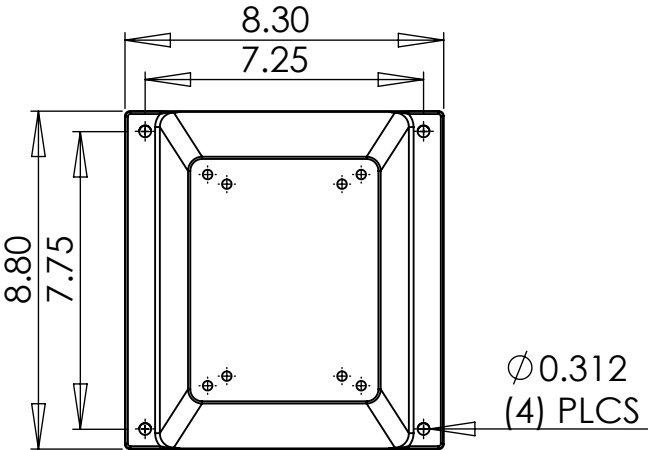
STANDARD TOLERANCES	TITLE: ATTACH. SM. WHL.W/O 402	SHEET 1 OF 1
X.X = ±0.06	PART NO. 965-4M	REV. A
X.X X = ±0.01		
X.X X X = ±0.005		
ANGLE = ±1/2°	DRAWN BY: KDE	DATE DRAWN: 12/21/2018



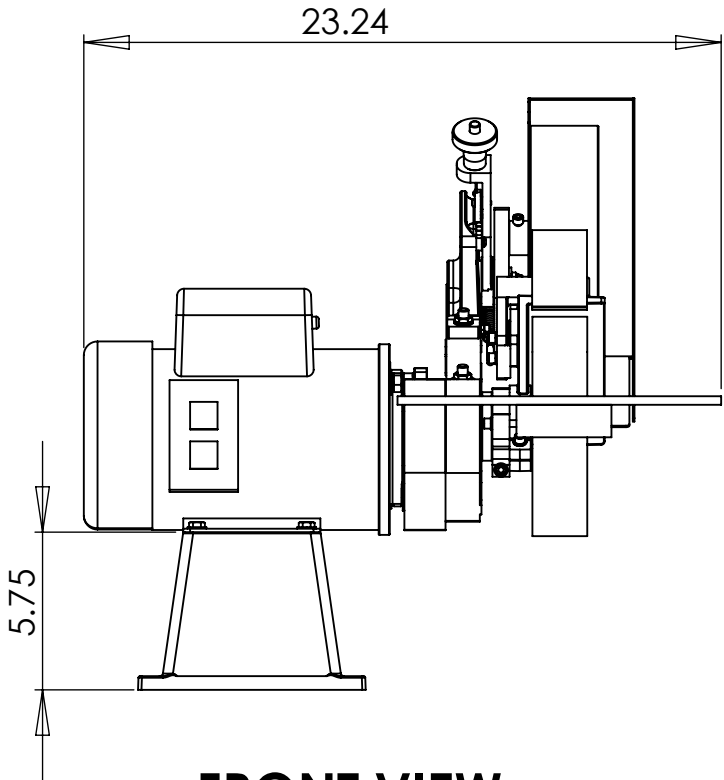
# MODEL 960-272



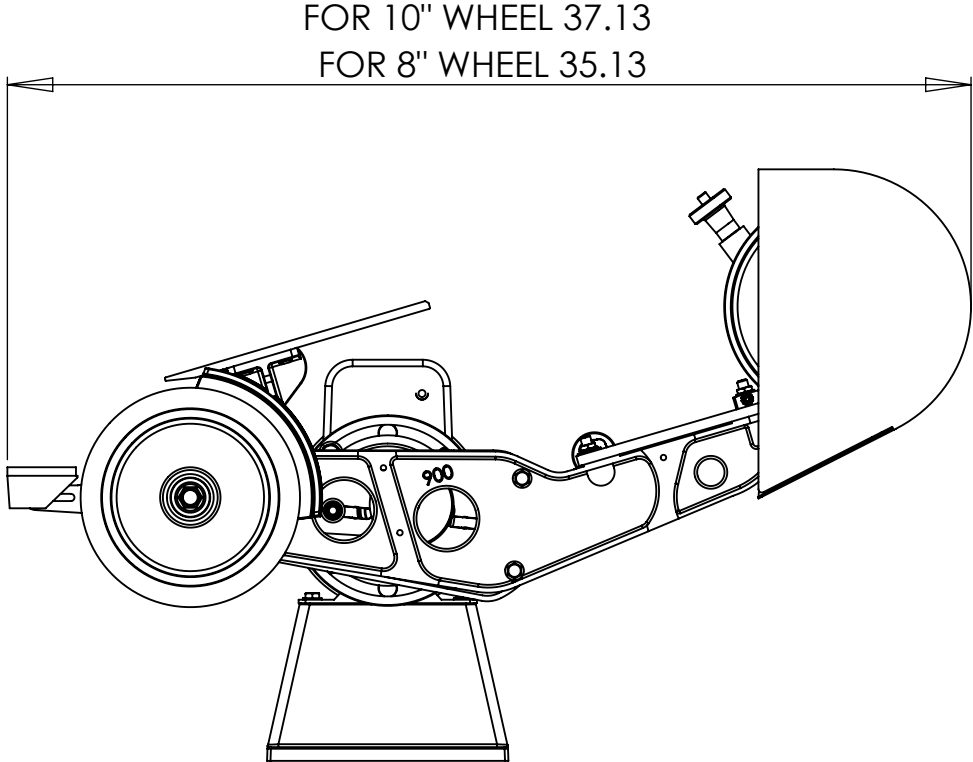
1220 TAMARA LANE  
WARSAW, MO. 65355



## MOUNTING PATTERN



FRONT VIEW



RIGHT SIDE VIEW