

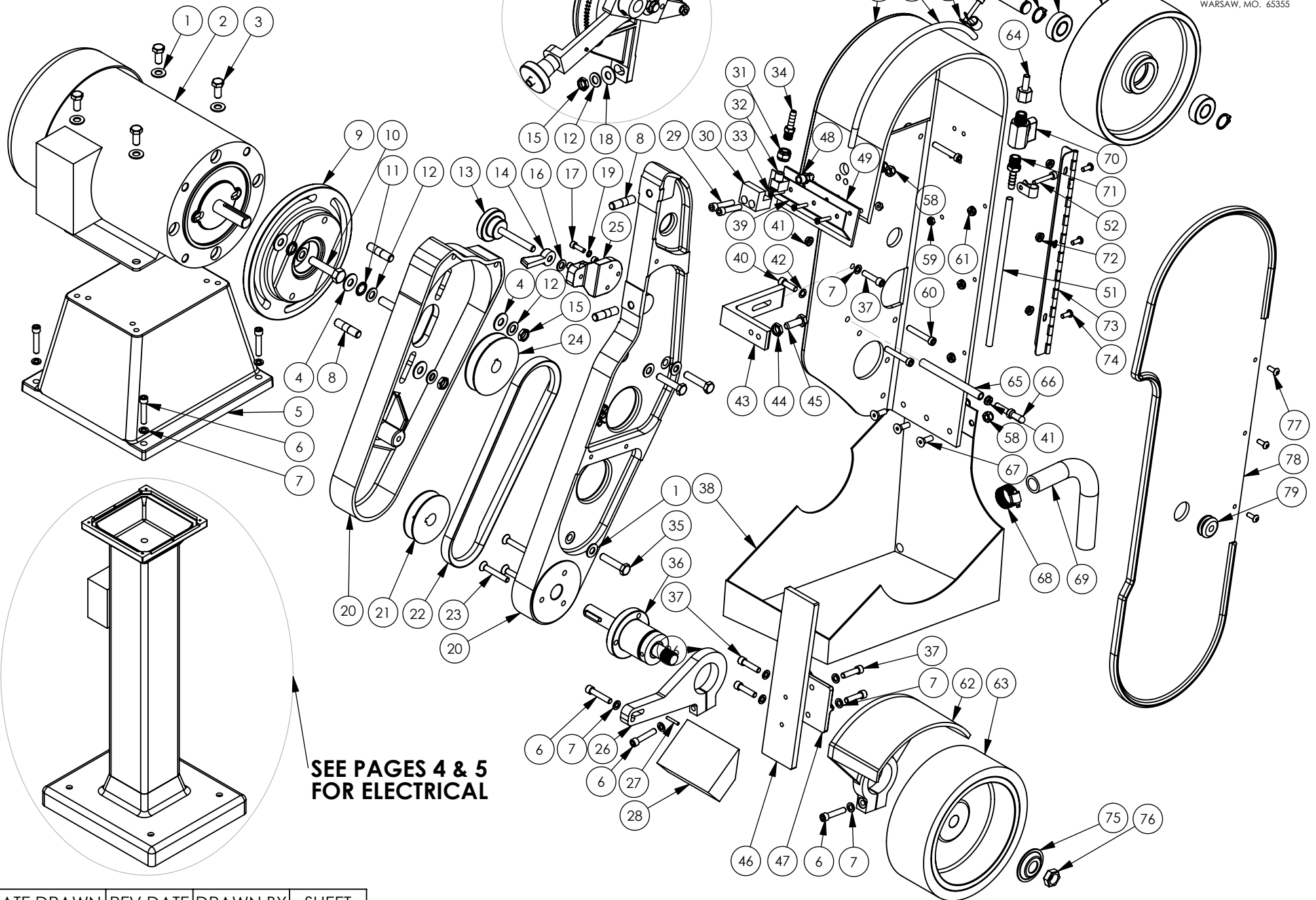
M960-251

SCHEMATIC

945S
SEE PAGE 2

BURR KING

1220 TAMARA LANE
WARSAW, MO. 65355



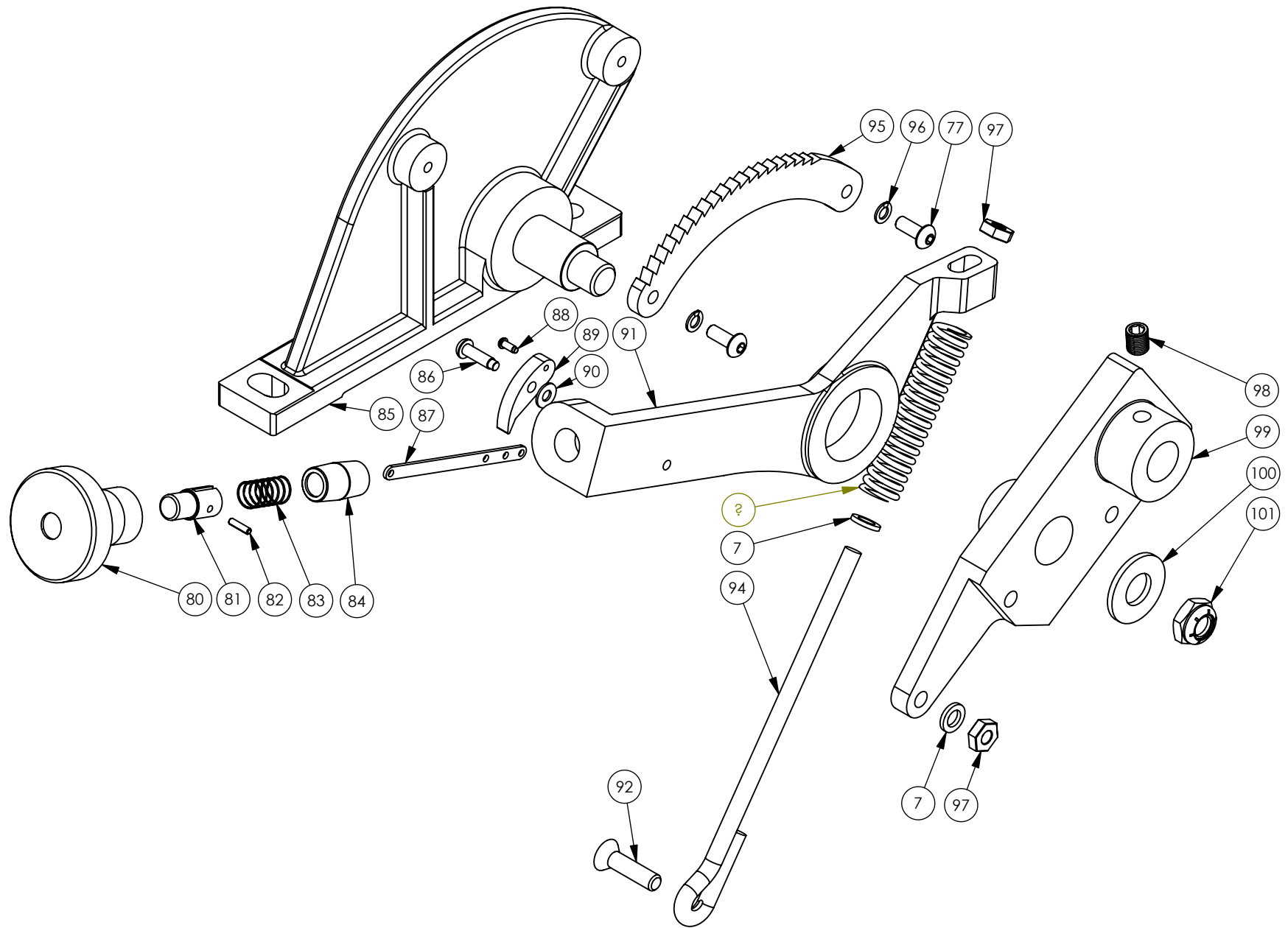
**SEE PAGES 4 & 5
FOR ELECTRICAL**

DATE DRAWN	REV DATE	DRAWN BY	SHEET
9/25/2009		CMW	1 OF 6

945S

BURR KING

1220 TAMARA LANE
WARSAW, MO. 65355



TITLE	DATE DRAWN	REV DATE	DRAWN BY	SHEET
M960-251	9/25/2009		CMW	2 OF 6

M960-251			
ITEM NO.	PART NUMBER	DESCRIPTION	QTY.
1	4	WASHER, 5/16 SAE ZINC PLTD	7
2	MOTOR*	CALL FACTORY	1
3	37	BOLT, 5/16-18x3/4 HH, GRD5, PLTD	4
4	42	WASHER, 3/8, THRU- HARD, YZ	4
5	941	BASE	1
6	31	SCREW, 1/4-20x1 1/4 SHCS	7
7	5	WASHER, 960-416, AN	15
8	920	STUD 3/8"x1 1/2", DOUBLE	4
9	908	ADAPTER, C-FACE MOTOR	1
10	1-0003	BOLT, 3/8-16 x 1 1/4, HH	2
11	5-0014	WASHER, 3/8, LOCK, INTERNAL STAR	2
12	17	WASHER, 960-616, AN	6
13	921	KNOB, TRACKING ASSY	1
14	922	LOCK, KNOB, TRACKING	1
15	39	NUT, 3/8-24, JAM, ESNA, NTE	4
16	18	WASHER, 960-516, AN	1
17	2-0023	SCREW, 10-24 X 5/8, SC, ALLEN	3
18	40	WASHER, 3/8, SAE	1
19	5-0036	WASHER, #8, LOCK, INTERNAL	3
20	900	FRAME, MAIN	1
21	725	PULLEY, 2 1/2 X 5/8	1
22	429	BELT, V DRIVE, 24"	1
23	6	SCREW, 1/4-20 x 1 1/2 FH ALLEN	3
24	730	PULLEY, 3 x 5/8	1
25	923	BRACKET, TRACKING	1
26	705-1	ARM, WORKREST SUPPORT	1
27	6-0014	PIN, 1/8 X 3/4, ROLL PLTID	1
28	706-1	WORKREST, ANTI-TILT	1
29	1-0035	BOLT, 1/4-20 X 1 1/4, SOC CAP SS	2
30	3571	BLOCK, SECURING	1
31	3570-1	COUPLING, 1/8" PIPE THD, BRASS	1
32	3569	ELBOW, STREET, EXTRUDE, 1/8, NP	1
33	3-0026	SCREW, 8-32 X 1, FH, PHILLIPS	3
34	3572	BARB, 1/8MP TO 1/4 TUBE, BRASS	1
35	1-0019	BOLT, 5/16-18x1 1/2 HH, CS	3
36	701	BEARING, CONTACT WHEEL ASSY	1
37	30	SCREW, 1/4-20x1 SHCS	5
38	DF4-1	SCOOP, FLUID	1
39	3577-2	BRACKET, BRUSH, RETAINING	1
40	29	SCREW, 10-32 X 1/2 BUT H	1
41	4-0013	NUT, 1/4-20, KEP	2
42	5-0032	WASHER, 1/4, LOCK, SPLIT, PLTD	1
43	924	SUPPORT, BACKUP	1
44	4-0009	NUT, 5/16-18, JAM, PLTD	1
45	1	BOLT, 5/16-18x1, HH, GRD 5, PLTD	1
46	904A	PLATEN, BACKUP	1
47	904B	BRACKET, PLATEN	1
48	3568	NOSSLE, SPRAY, BRASS, 1/8 NPT	1
49	3577	FELT	1
50	942S	GUARD, SAFETY, SPECIAL	1
51	3408	TUBING, CLEAR, FLEXIBLE, 1/4 ID	1
52	3-0036	SCREW, 10-32 X 1/2 ALLEN CAP	2
53	3578	CLAMP, 3/8 OD PLS. HOSE	2
54	707c	SHAFT, BEARING, GROUND	1
55	701F	RING, RETAINING, 5/8 ENTENAL	2

M960-251			
ITEM NO.	PART NUMBER	DESCRIPTION	QTY.
56	701B	BEARING 5/8 x 1 3/8	2
57	907	WHEEL, IDLER	1
58	4-0022	NUT, 1/4-20, SS, NYLOK	5
59	4-0025	NUT, 8-32, ELASTIC, STOP, SS	5
60	2-0011	SCREW, 1/4-20 X 1.5 SOC CAP	3
61	23	NUT, 6-32, KEP, PLTD	3
62	903M	GUARD, CONTACT WHEEL	1
63	802	CONTACT WHEEL, 7x2.5, 55 DURO	1
64	3340	BARB, HOSE, FM, 1/4H X 1/4F	1
65	942C-2	STANDOFF, DOOR	1
66	742L	LATCH, STUD	1
67	3-0039	SCREW, 1/4-20 X 3/4, S/S FH SCS	3
68	3406	CLAMP, HOSE, 7/16 TO 1	1
69	3409	HOSE, STL. REINF. 5/8 ID VIN	1
70	3337	VALVE, LOW PRESSURE, 1/4 NPT	1
71	3339	BARB, ML, HOSE, 1/4H X 1/4M	1
72	14	NUT, 10-24, KEP	3
73	742E	HINGE, GUARD TO DOOR	1
74	24	SCREW, 6-32 x 1/2, MACH	3
75	726	FLANGE, OUTER WHEEL	1
76	727	NUT, 5/8-18 RH, JAM, BRT PLT	1
77	9	SCREW, 10-24x1/2 BH, BLK OXIDE	5
78	942B	DOOR, GUARD	1
79	742H	GROMMET, SAFETY GUARD DOOR	1
945S			
ITEM NO.	PART NUMBER	DESCRIPTION	QTY.
80	737A	KNOB, HANDLE	1
81	737B-1	BUTTON	1
82	26	PIN, 3/32 x 3/8, ROLL PLTID	1
83	737D	SPRING, REAR WHEEL ASSY	1
84	737E	NIPPLE, HANDLE	1
85	940	SUPPORT, IDLER WHEEL	1
86	27	SCREW, #8 X 5/8, DRIVE	1
87	937BA	STRIP, BUTTON ASSEMBLY	1
88	28	SCREW, #2 x 1/4, DRIVE	1
89	737F	PAWL	1
90	5-0027	WASHER, #8, 18-8 STAINLESS STEEL	1
91	937G	HANDLE	1
92	34	SCREW, 1/4-20 X 1, FH PHILLIPS	1
93	738	SPRING, BELT TENSION	1
94	939	GUIDE, SPRING	1
95	736	SECTOR	1
96	15	WASHER, #10, LOCK	2
97	3	NUT, 1/4-20 JAM, PLTD	2
98	30	SCREW, 1/4-20 X 1, SOC CAP	1
99	935M	SUPPORT, REAR WHEEL	1
100	21	WASHER, 1/2 SAE, FLAT, ZINC	1
101	20	NUT, 1/2-20, JAM, ESNA, NTE	1

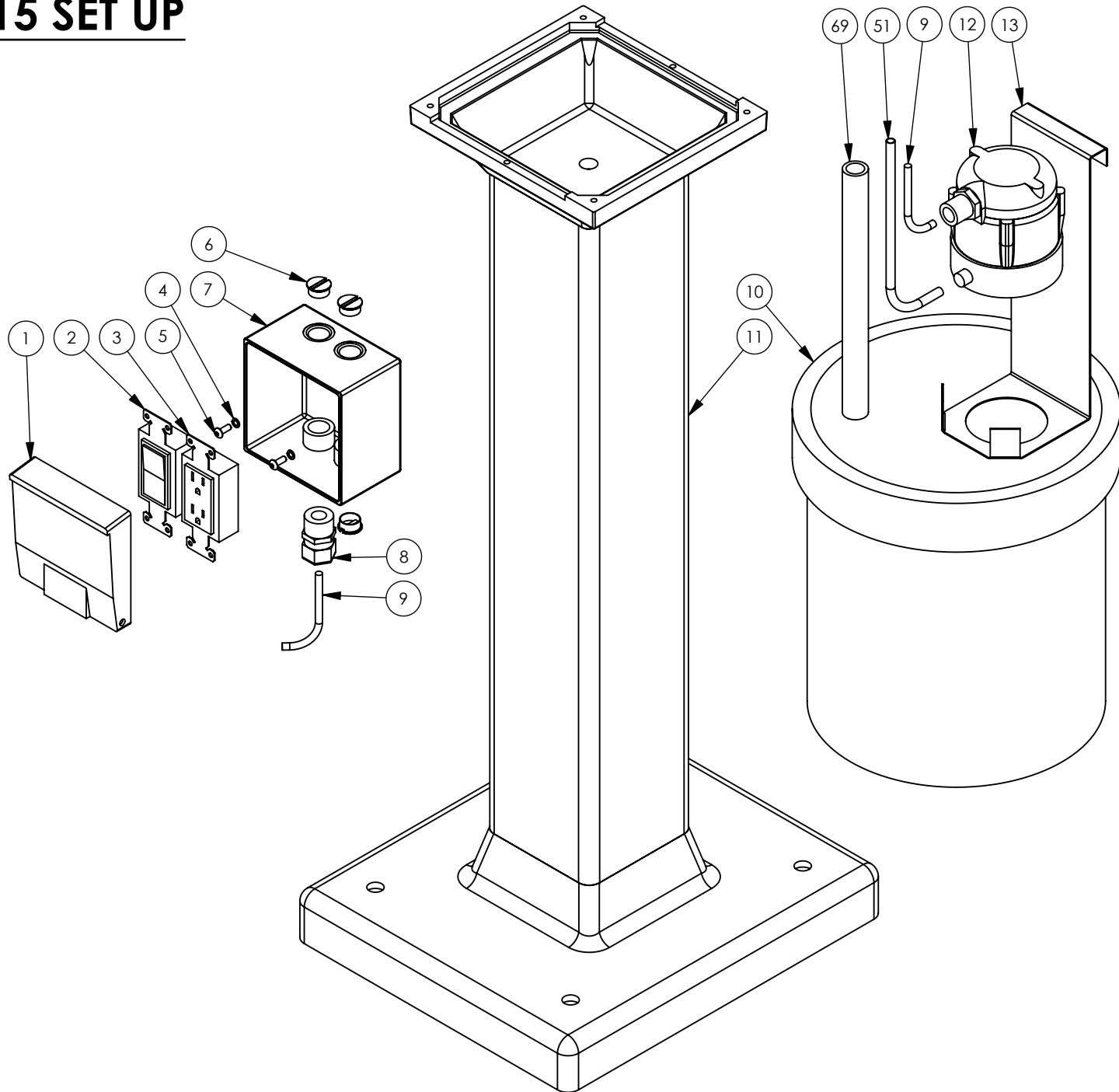
*** USES A 011D TOGGLE SWITCH**

TITLE	DATE DRAWN	REV DATE	DRAWN BY	SHEET
M960-251	9/25/2009		CMW	3 OF 6

115 SET UP

BURR KING

1220 TAMARA LANE
WARSAW, MO. 65355

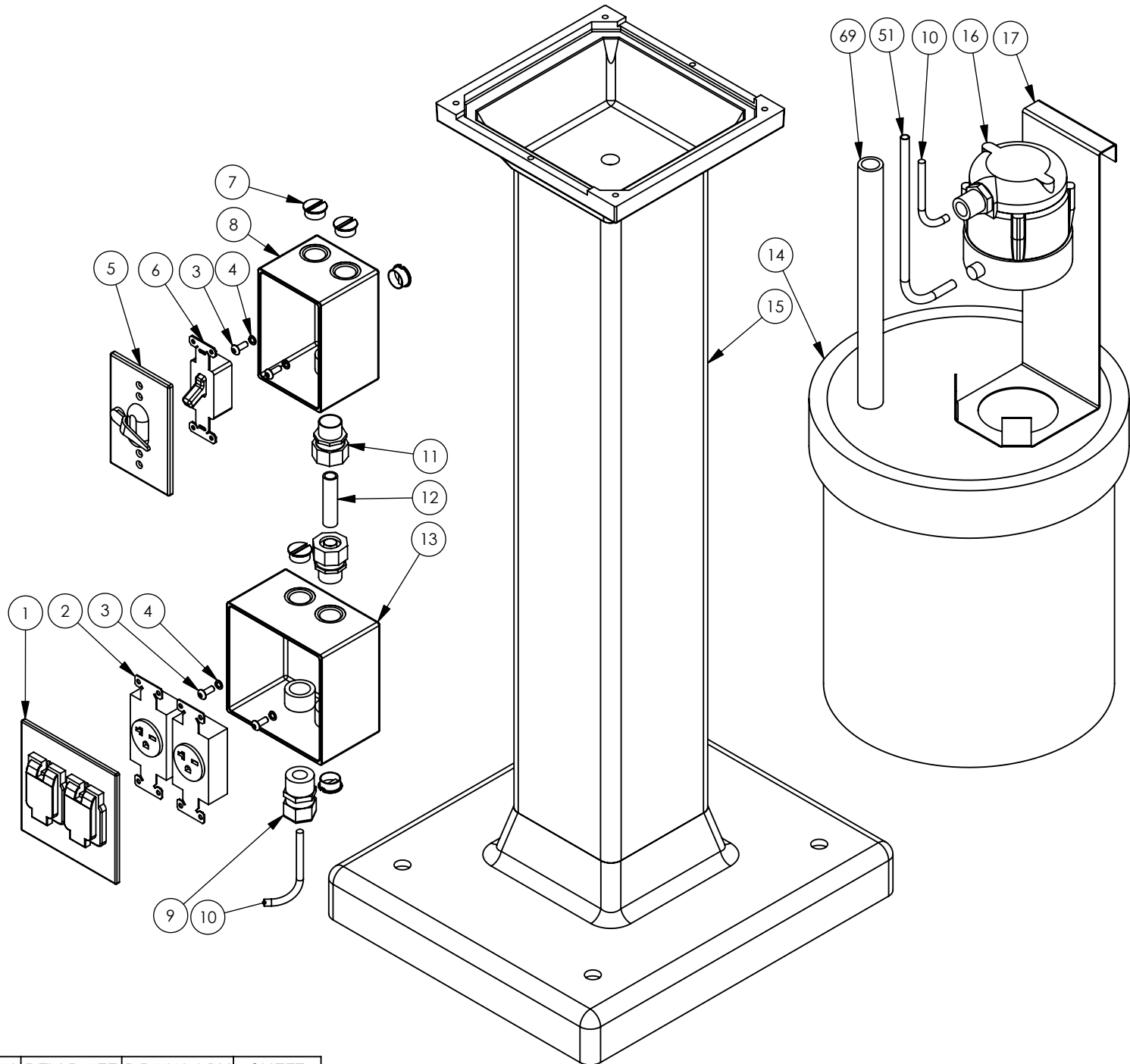


TITLE	DATE DRAWN	REV DATE	DRAWN BY	SHEET
M960-251	9/25/2009		CMW	4 OF 6

220 SET UP

BURR KING

1220 TAMARA LANE
WARSAW, MO. 65355



TITLE	DATE DRAWN	REV DATE	DRAWN BY	SHEET
M960-251	9/25/2009		CMW	5 OF 6

115V SET UP

ITEM NO.	PART NUMBER	DESCRIPTION	QTY.
1	9952	COVER, 2 GANG RAYNTITE,5045-0	1
2	9951	SWITCH, ROCKER, 15A, 120V,	1
3	9950	RECEPTACLE, GFI, DUPLEX, 120V	1
4	15	WASHER, 5/16 LOCK, SPLIT	2
5	9	SCREW, 10-24x1/2 BH, BLK OXIDE	2
6	9902	PLUG, 1/2" CONDUIT	3
7	3326	BOX, WP, 2 GANG, DEEP	1
8	3356	RELEIF, STRAIN, 1/2"	1
9	015	CORD	2
10	3317	PAIL, 5 GAL. PLASTIC, BLACK	1
11	02	PEDESTAIL	1
12	3316-3	PUMP, WATER/120V/1PH/60HZ	1
13	3331	BRACKET, PUMP HANGER	1
51	3408	TUBING, CLEAR, FLEXIBLE, 1/4 ID	1
69	3409	HOSE, STL. REINF. 5/8 ID VIN	1

220V SET UP

ITEM NO.	PART NUMBER	DESCRIPTION	QTY.
1	3567-2	COVER, 2 GANG, 2 SGL, RCPT, WP	1
2	3329-1	RECP, 20A SINGLE 250V	2
3	9	SCREW, 10-24x1/2 BH, BLK OXIDE	4
4	15	WASHER, #10 LOCK	4
5	3325	COVER, SINGLE, LEVER, RAIN	1
6	3323	SWITCH, TOGGLE	1
7	9902	PLUG, 1/2" CONDUIT	5
8	3354	BOX, WP, SINGLE, DEEP	1
9	3356	RELEIF, STRAIN, 1/2"	1
10	017	CORD	2
11	775	CONNECTOR, 3/8" STR, LIQ. TIGHT	2
12	020	CONDUIT, 3/8", LIQ. TIGHT	1
13	3326	BOX, WP, 2 GANG, DEEP	1
14	3317	PAIL, 5 GAL. PLASTIC, BLACK	1
15	02	PEDESTAIL	1
16	3316-1	PUMP, WATER, 220V/1PH/50-60HZ	1
17	3331	BRACKET, PUMP HANGER	1
51	3408	TUBING, CLEAR, FLEXIBLE, 1/4 ID	1
69	3409	HOSE, STL. REINF. 5/8 ID VIN	1

TITLE	DATE DRAWN	REV DATE	DRAWN BY	SHEET
M960-251	9/25/2009		CMW	6 OF 6