

- Versatile • Reliable • Powerful
- Smooth • Heavy Duty

**BURR KING®**

## TWO WHEEL BELT GRINDER MODEL 960-400

- Up to 6,600 SFPM Abrasive Belt Speed
- Fixed and variable speed models available
- 120 Volt Single Phase to 575 Volt 3 Phase & multiple horsepower options available
- Rotating parts covered eliminating parts entanglement, greater operator safety
- Contact wheel, platen and work support grinding
  - Adjustable belt tension
  - Improved door latching system
  - Positive belt tracking
- Quick belt change
- Compact footprint friendly to "cell" manufacturing
- Multiple Durometer Contact Wheel with plain or serrated face are available
- Adapts for "tool post" or "on center" grinding

4" x 60" Belt Size

95103 Shown with optional 02-10 adjustable height pedestal

Burr King's family of two wheel grinders provides vigorous contact wheel, workrest, and platen grinding in a frame design that pivots to ideal work positions.

These machines are frequently selected as tool post grinders, roll grinders, and for fixturing into centerless grinding applications.

Available in easily adjustable variable speed and aggressive single speed with multiple motor horsepower options.

**THE BURR KING MODEL 960-400  
TWO WHEEL BELT GRINDERS  
OFFERS CONTACT, BACKUP PLATEN,  
AND WORKTABLE BELT GRINDING  
UPTO 6,600 S.F.P.M.  
USING A 4" X 60" BELT**



e-catalog

Click or Scan the QR Codes for more information



Videos

Click or Scan the QR Codes for more information



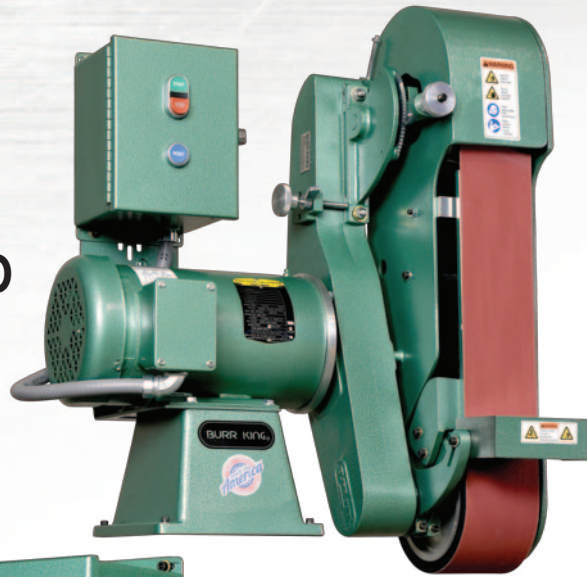
Instructions



**MODEL  
960-400**



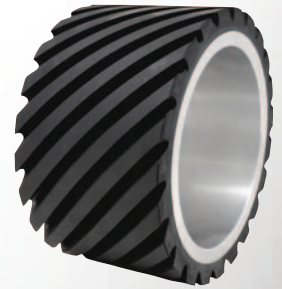
*Fixed and adjustable height pedestals offer a free-standing option over bench mounting.*



*Optional magnetic starters or variable frequency drives are available on the 960-400 belt grinder.*



*Two styles of dust scoops are available for contact wheel or platen grinding.*



*90 durometer serrated contact wheels are available to increase grinding efficiencies.*

**960-400 BELT GRINDER SPECIFICATIONS**

For optional features & specifications consult factory

Abrasive Belt Size	4" x 60"
Horsepower	1.5 HP up to 3 HP
Voltage	120 Volt Single Phase up to 575 3 Phase
Abrasive Belt Speed (up to)	6,600 SFPM - Fixed or Variable Speed Available
Throat Clearance	None
Contact Wheel Dimensions	7" x 4"
Contact Wheel Hardness	55 Durometer - Optional 20 & 90 Duro
Belt Tension, Quick Change Assembly	Yes
Positive Belt Tracking Adjustment	Yes
Overall Height x Width x Depth	30" x 21" x 30"
Safety Belt Guard	Yes
Base Area	8-1/2" x 8"
Steel Backup Platen	4" x 14"
Adjustable Workrest	Yes
Construction	Cast Aluminum
Estimated Shipping Weight	95 - 145 lbs
Bench or Pedestal Mounted	Yes



*The 960-400 can be configured with fixed or adjustable speed motor controls.*

*95030 shown with optional o2 pedestal.*