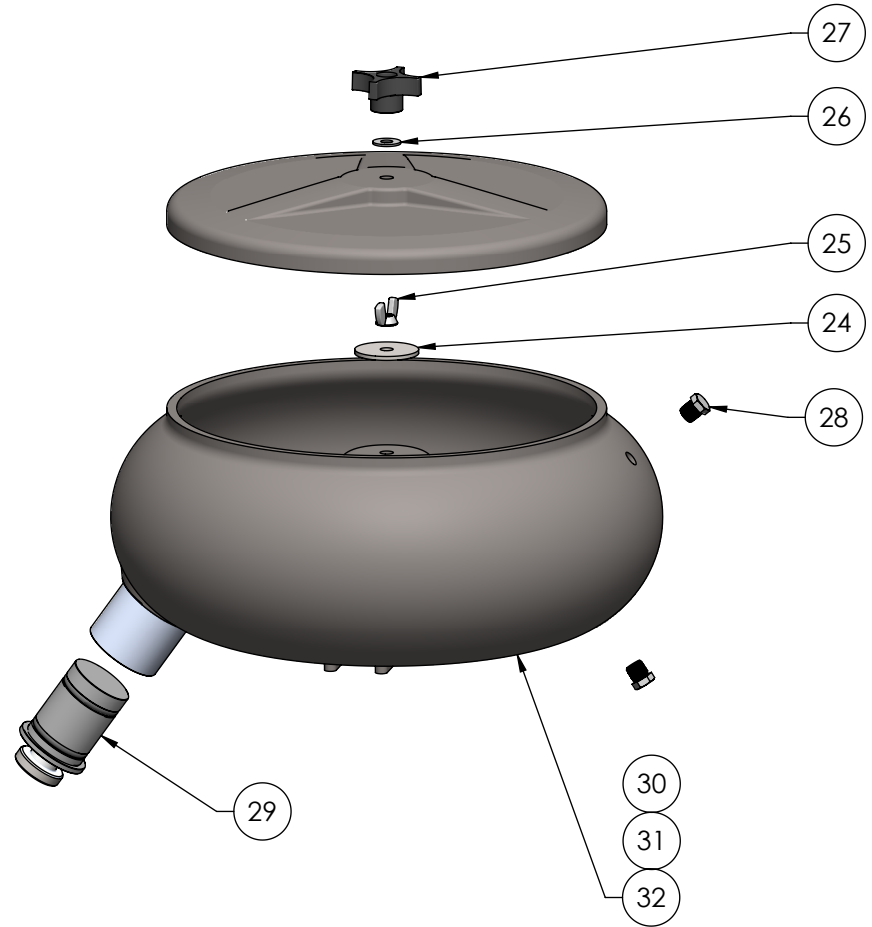
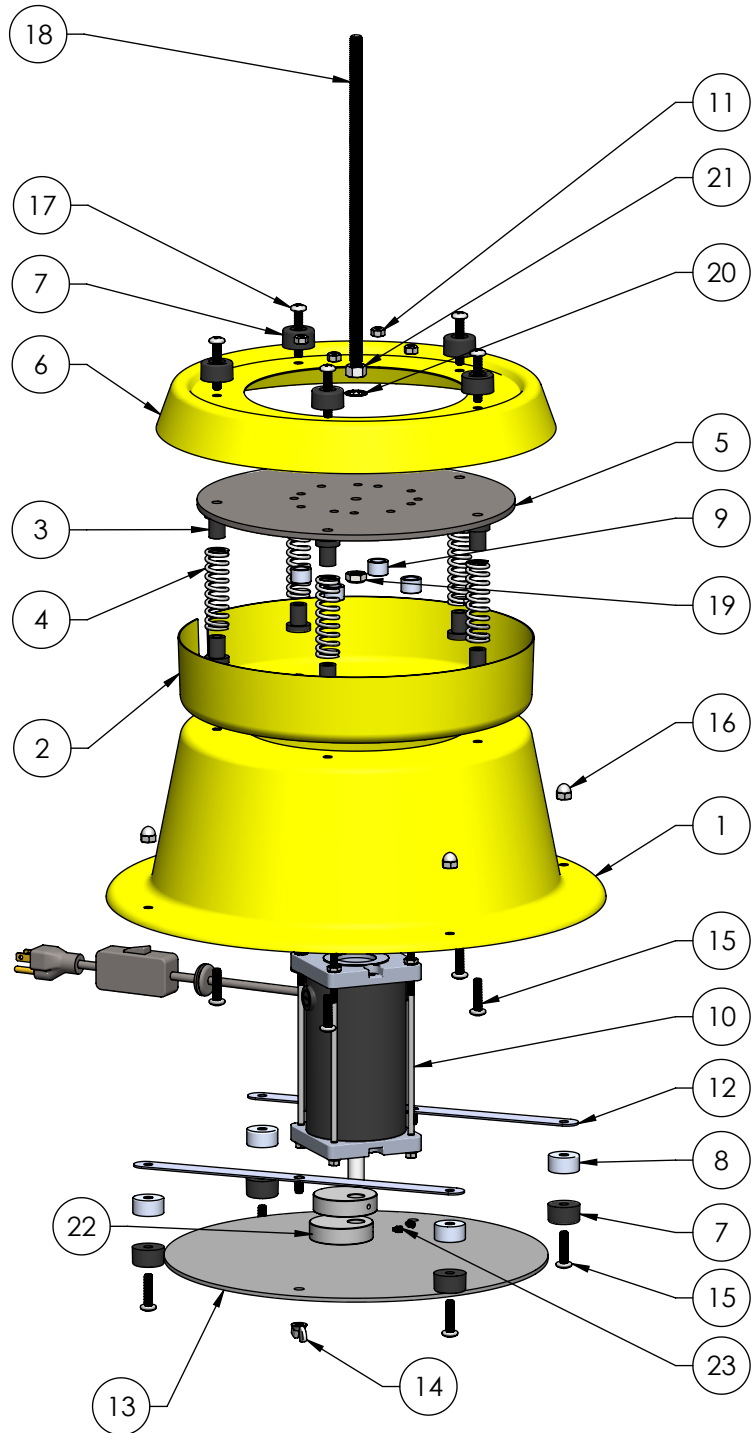


# MODEL 150/200/200C EXPLODED VIEW



**BURR KING**

1220 TAMARA LANE  
WARSAW, MO 65355  
PH: 660-438-8998  
800-621-2748  
FAX: 660-438-8991  
E-MAIL: info@burrking.com

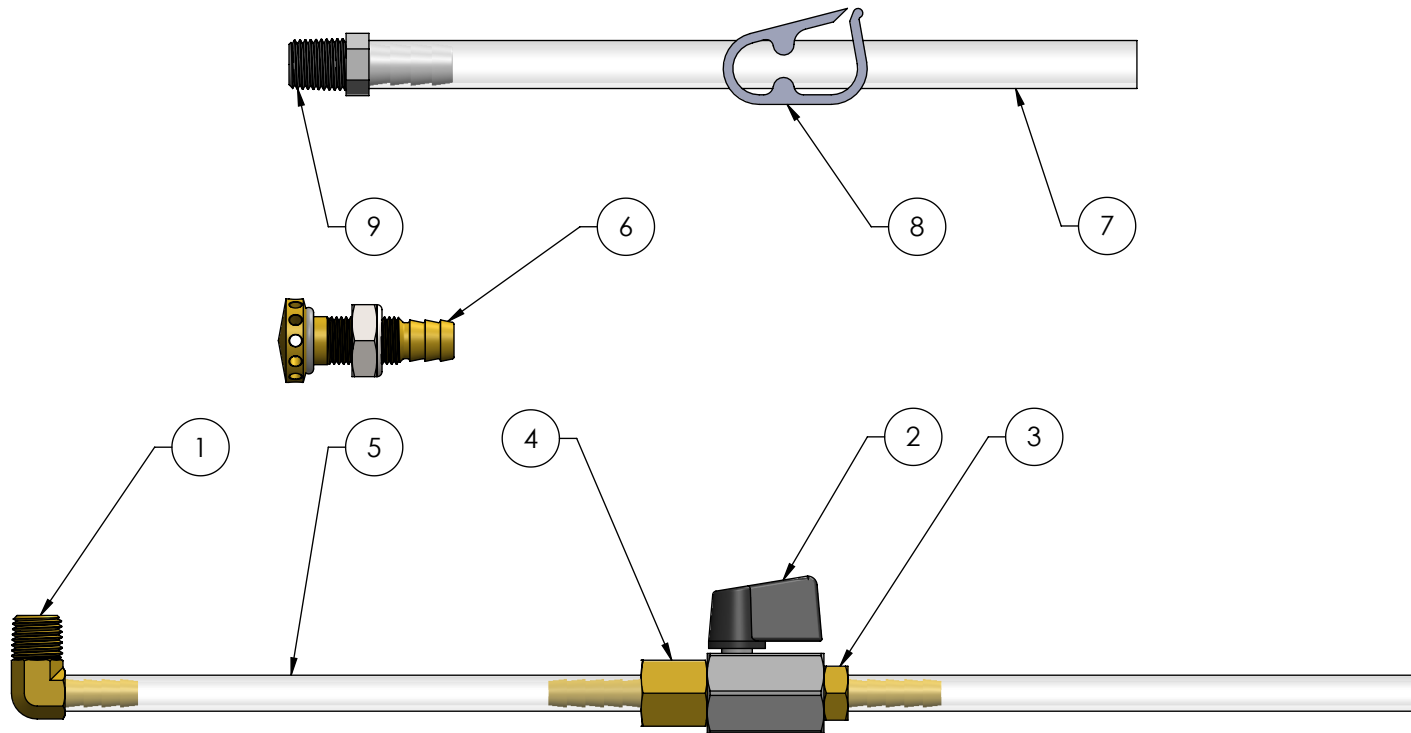
# MODEL 150/200/200C PARTS LIST

ITEM NO.	PART NUMBER	DESCRIPTION	QTY.
1	1517-2	BASE 150/200	1
2	1516-2	COVER-SPRING	1
3	1513	PERCH-SPRING	10
4	1514	SPRING	5
5	1512-2	PLATE-MOTOR	1
6	1511	SKIRT-SPRING	1
7	1515-1	GROMMET/BUMPER	9
8	1521	SPACER-FOOT	4
9	1523-1	SPACER-MOTOR	4
10	1535	MOTOR 1/5 HP 115V	1
11	2B	NUT 10-32 NYLOK	4
12	1518	BRACKET-COVER	2
13	1519	SCREEN-SAFETY	1
14	10B	NUT 1/4-20 WING	2
15	8B	SCREW 1/4-20 x 1 PAN HEAD	9
16	11B	NUT 1/4-20 ACORN	4
17	1B	SCREW 1/4-20 x 1 1/2 PAN HEAD	5
18	1502	SHAFT 3/8-16 THD.	1
19	4-0005	NUT 3/8-16 NYLOK JAM	1
20	5-0014	WASHER 3/8 INTERNAL STAR	1
21	12B	NUT 3/8-16 GR. 5	1
22	1530	WEIGHT-COUNTER	2
23	3-0016	SET SCREW 10-24 x 1/4 BT	2
24	1504	WASHER 3/8 FENDER	1
25	1503	NUT 3/8-16 WING	1
26	40	WASHER 3/8 SAE	1
27	1500	KNOB 3/8-16	1
28	1506	PLUG 1/4 NPT PLASTIC	2
29	1550	PLUG-CHUTE (ASSY)	1
30	1510	150 BOWL & LID	1
31	1520	200 BOWL & LID	1
32	1520-1	200C BOWL & LID W/CHUTE	1

**BURR KING**

1220 TAMARA LANE  
 WARSAW, MO 65355  
 PH: 660-438-8998  
 800-621-2748  
 FAX: 660-438-8991  
 E-MAIL: info@burking.com

# MODEL 150/200 OPTIONAL FITTINGS

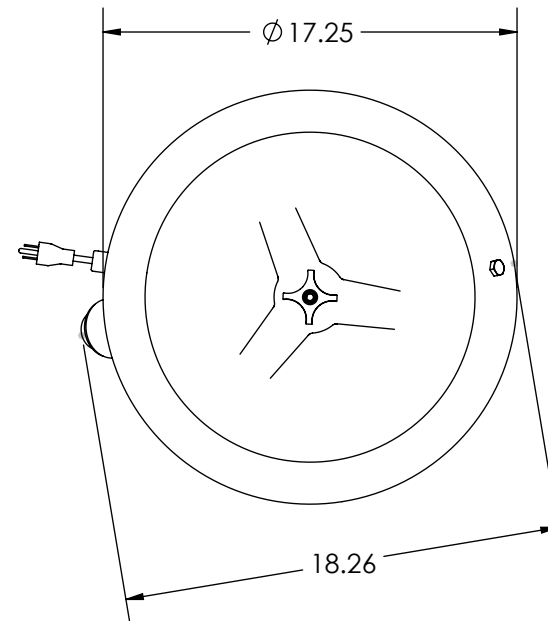
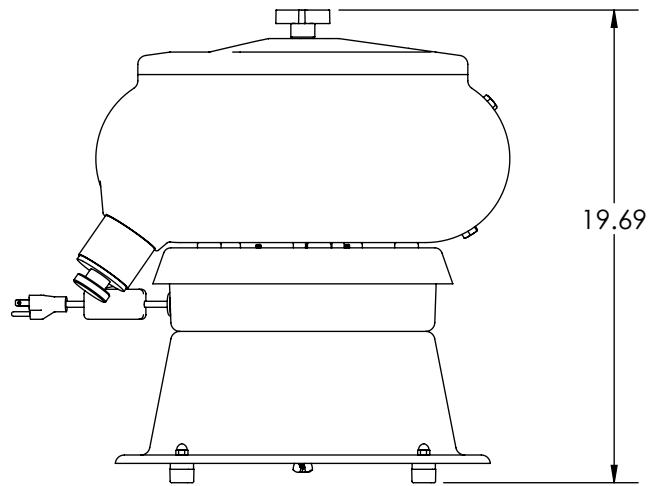
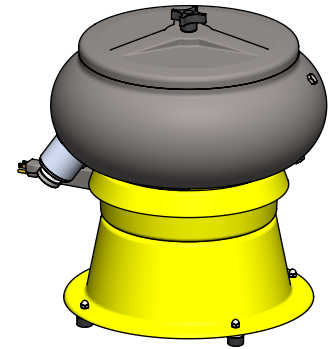


ITEM NO.	PART NUMBER	DESCRIPTION	QTY.
1	3341-1	BARB-HOSE EL 1/4 x 1/4	1
2	3337	VALVE-BALL 1/4 x 1/4	1
3	3339	BARB-HOSE ML 1/4 x 1/4	1
4	3340	BARB-HOSE FM 1/4x1/4	1
5	3408	HOSE-CLEAR 1/4 x 3/8	2
6	1537	DRAIN-BRASS (ASSY)	1
7	1508	HOSE-CLEAR 3/8 x 1/2	1
8	1509	CLAMP-HOSE	1
9	1507	ADAPTER-HOSE 1/4 NPT	1

**BURR KING**

1220 TAMARA LANE  
 WARSAW, MO 65355  
 PH: 660-438-8998  
 800-621-2748  
 FAX: 660-438-8991  
 E-MAIL: info@burrking.com

# MODEL 150/200/200C FOOTPRINT



**BURR KING**

1220 TAMARA LANE  
WARSAW, MO 65355  
PH: 660-438-8998  
800-421-2748  
FAX: 660-438-8991  
E-MAIL: info@burking.com