

- Versatile • Reliable
- Powerful • Smooth
- Heavy Duty



THREE WHEEL BELT GRINDER MODEL 760

- Up to 8,000 SFPM Abrasive Belt Speed
- Fixed and variable speed models available
- 120 Volt Single Phase to 575 Volt 3 Phase & multiple horsepower options available
- Rotating parts covered eliminating parts entanglement, greater operator safety
- Deeper horizontal and vertical throat clearance for larger and odd shaped parts
- Improved dust extraction
- Improved door latching system
- Pinch point guarding when back up platen is removed
- Urethane covered idler wheels for longer life & Electrostatically conductive wheels
- Multiple Durometer Contact Wheel with plain or serrated face are available
- Grind, polish, buff with one machine
- Small wheel attachment



1-1/2" x 60" or
2" x 60" Belt Size

Burr King's family of three wheel grinders provides maximum versatility. Contact wheel, platen, workrest support, and loose belt grinding are precision controlled with positive belt tracking, quick belt change, and linear belt tension.

Constructed of rugged cast aluminum and precision machined components, every Burr King grinder delivers unexcelled grinding performance and reliability.

**THE MODEL 760 IS THE LARGEST
EXAMPLE OF OUR VERSATILE
THREE WHEEL BELT GRINDERS.
IT OFFERS CONTACT,
BACKUP PLATEN, WORKTABLE AND
LOOSE BELT GRINDING UPTO 8000 S.F.P.M.**



Click or Scan
the QR Codes
for more
information



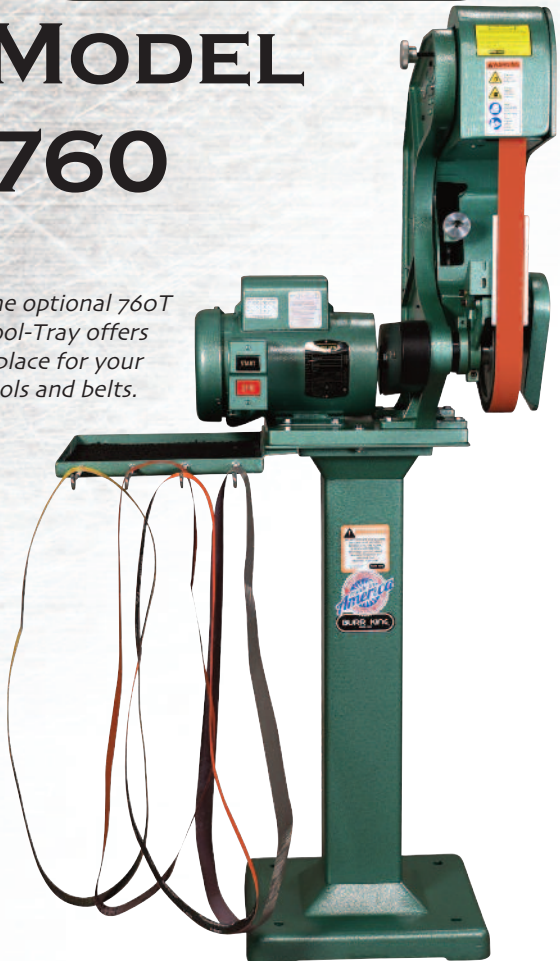
Click or Scan
the QR Codes
for more
information



BURR KING®

MODEL 760

The optional 760T Tool-Tray offers a place for your tools and belts.



Fixed and adjustable height pedestals offer a free-standing option over bench mounting



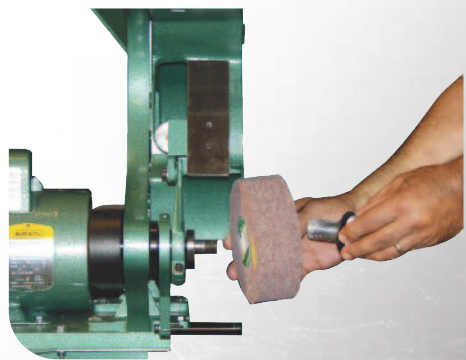
Optional magnetic starters provide safe and efficient 3 phase power



The 1400 series small wheel attachments allow you to grind in places you wouldn't have dreamed of before. Wheels from 9/16" to 1.5" in diameter are available.



All aluminum construction allows the 760 to run fast and smooth.

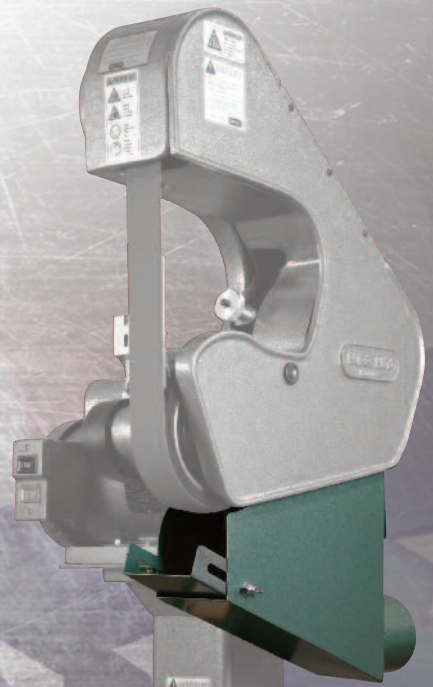


Easily mount surface conditioning wheels up to 2" wide with available adapters.

760 BELT GRINDER SPECIFICATIONS

For optional features & specifications consult factory

Abrasive Belt Size	1-1/2" or 2" x 60"
Horsepower	1.5 HP Standard - Optional up to 3 HP
Voltage	120 Volt Single Phase up to 575 3 Phase
Abrasive Belt Speed (up to)	8000 SFPM - Fixed or Variable Speed Available
Throat Clearance	8-7/8"
Contact Wheel Dimensions	7" x 1-1/2" or 7" x 2"
Contact Wheel Hardness	55 Durometer - Optional 20 & 90 Duro
Belt Tension, Quick Change Assembly	Yes
Positive Belt Tracking Adjustment	Yes
Overall Height x Width x Depth	26" x 24" x 23"
Safety Belt Guard	Yes
Base Area	10" x 13"
Steel Backup Platen	2" x 6" x 1/4"
Adjustable Workrest	Yes
Construction	Cast Aluminum
Estimated Shipping Weight	105 - 135 lbs
Bench or Pedestal Mounted	Yes



The optional dust scoop offers a 4" port that will connect to your existing dust collector or take a look at our dust collectors that are available.